

## Wood Chimney &amp; Pipe

# Section 100

## Wood Chimney & Pipe

Page Number	Vendor	Product	Sold Regionally	Publish Date
101-105	M & G Dura-Vent	DuraPlus 2100HT Class A Chimney		05/25
106-116	M & G Dura-Vent	Duratech Chimney	✓	05/25
117-119	M & G Dura-Vent	DVL Close Clearance Connector		05/25
120-122	M & G Dura-Vent	Dura-Black Single Wall Stove Pipe		05/25
123-124	M & G Dura-Vent	Dura Chimney II		05/25
125	"Reliance Liner" by American Hearth	Reducers/Increases		08/21
126	"Reliance Liner" by American Hearth	Single Wall Pipe Baffles		08/21
126-127	U.S. Fireplace Products	Seal Tight & Energy Top Dampers		05/23
127-128	"Reliance Liner" by American Hearth	Chimney Caps, Stainless Steel		08/21
128-129	HY-C	Chimney Caps		04/24
129	HY-C	Smoke Guard - Draft Enhancer		04/24
130-134	American Chimney Shroud	Decorative Chimney Shrouds and Pots		06/18

**PLEASE NOTE:** Not all products are sold throughout all AES territories/regions. If "Sold Regionally" please contact AES Inside Sales for availability 800-682-9722

Or by visiting...



**DuraVent**  
Member of & M&G Group



For same day shipping, place order by: 1pm (CO), 2pm (CA, WA) and 11am (MN, TX). Give us a call at 1-800-682-9722

Associated Energy Systems - Serving you with distribution centers in: Kent, WA | West Sacramento, CA | Denver, CO | Dallas, TX | Rogers, MN

Stock: Y = Stock, N or \* = Non-Stock, LTSD = Limited to Stock on Hand

Non-Stock Item Notice: Items marked non-stock must be ordered in case quantities

2  
0  
2  
5  
-  
2  
0  
2  
6



## Wood Chimney & Pipe

### M & G Dura-Vent

#### DuraPlus 2100° F Chimney System

**DuraVent**  
Member of M&G Group

2  
0  
2  
5  
-  
2  
0  
2  
6

**DuraPlus 2100°F Chimney System** - The innovative triple-wall chimney system from Simpson Dura-Vent, offering superior performance and ease of installation. DuraPlus is the leader in triple-wall chimney for wood, oil, gas and coal-fired appliances. DuraPlus Chimney features a patented firesafe design and:

- Chimney components for every conceivable installation requirement
- Twist-lock pipe and fittings for ease of installation
- Lightweight for easy handling
- .016" 430 stainless steel inner liner
- Galvanized steel outer wall (or optional stainless steel)
- U.L. listed to 103 HT Standard
- 25-year warranty

**The DuraPlus 2100° F Chimney System, offered in 6", 7"\* and 8" sizes**, is designed for use with gravity appliances that have been tested and listed for use with a 2100° HT chimney system, including wood stoves, fireplaces, oil, gas and coal fired appliances. Allow a minimum of 2" airspace clearance to combustibles.

**A DuraPlus chimney STAYS COOL ON THE OUTSIDE** at all times to protect the building during normal stove operation. It **STAYS HOT ON THE INSIDE** to discourage the deposit of creosote, while providing the correct draft for stove performance. Two layers of insulation (ceramic blanket plus air space) keep the DuraPlus cool outside to protect the building, and hot inside to boost stove efficiency during normal stove operation. If a red hot creosote fire does erupt, the patented DuraPlus FIRESAFE DESIGN serves to protect both the chimney and the building.

**DuraPlus liner is designed to not warp or buckle.** Special end ring suspension at each joint flexes to allow the inner liner to expand lengthwise when hot. In addition, ceramic insulating blanket is flexible and compressible, so the liner can expand outward when hot.

**Chimney Lengths** - DuraPlus chimney pipe in 6", 9" and 12" lengths have a 1" insulating blanket. The 24" and 36" lengths have a 1/2" blanket. To calculate the installed length of DuraPlus or Dura-Chimney pipe lengths, subtract 1-1/2" from each length of chimney pipe.

**Elbows** - Use elbows to offset obstructions such as rafters, ridgepoles or joists. 6", 7" and 8" diameters may have two pairs of elbows, if needed. Larger diameters are restricted to one pair of offsets. Offsets greater than 30° are not allowed. Elbows are not adjustable. DuraPlus elbows have a 1" insulating blanket.

**Tee with Cap** - The tee can be used to start chimneys indoors (inside a chase) or outdoors. The tee clean-out cap is removable for easy chimney cleaning or inspection. Wall straps, a wall thimble and a tee support must be installed with the tee as directed. DuraPlus tees have 1" insulating blanket. Ventilation for chimney must be drawn from outdoors.

**Tee Support Bracket** - Use to support the tee, the tee bracket is suspended from a wall. Safety shelf protects against creosote leaks. Supports up to 35' of DuraPlus Chimney or 50' of DCR Chimney.

**Wall Thimble** - The wall thimble adjusts from 4 3/4" to 7 3/4" and fits between standard wall studs. The telescoping pieces can be separated and an extension installed to accommodate thicker walls. The interior trim ring is painted black. The wall thimble must be installed with an appropriate length of chimney pipe through the wall horizontally.



Length



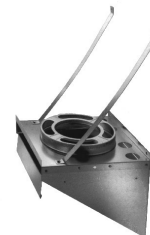
15° Elbow



30° Elbow



Tee with Cap



Tee Support Bracket

For same day shipping, place order by: 1pm (CO), 2pm (CA, WA) and 11am (MN, TX). Give us a call at 1-800-682-9722

Stock: Y = Stock, N or \* = Non-Stock, LTSD = Limited to Stock on Hand

Non-Stock Item Notice: Items marked non-stock must be ordered in case quantities

## Wood Chimney & Pipe

### M & G Dura-Vent

Dura/Plus 2100° F Chimney System

**DuraVent**  
Member of M&G Group

**Square Ceiling Support Box and Trim Collar** - Square locking ceiling support boxes are painted black. A 1 1/2" wide trim collar is included with all square support boxes. Supports up to 35' of DuraPlus Chimney or 50' of DCR or DC Chimney.

**Round Ceiling Support Box** - Round locking support boxes are painted black. 1 1/2" trim is included. Supports up to 35' of DuraPlus Chimney or 50' of DCR Chimney.

**Flat Ceiling Support Box** - Flat ceiling support boxes are not painted. Can be painted with high temperature paint. They are designed for installation in flat ceilings only. One-inch wide trim is attached. Supports up to 35' of DuraPlus Chimney or 50' of DCR or DC Chimney.

**Firestop Radiation Shield** - Install where a chimney passes through a floor or ceiling without a support box. Centers pipe and provides proper clearance.

**Close Clearance Shield** - Used when chimney passes through the roof opening with less than the normal 2" minimum clearance to roof trusses or rafters. Pipe must be centered within close clearance shield.

**Attic Insulation Shield** - Attic insulation shields consist of two parts: collar and base. This universal attic insulation shield must be used in all installations that pass through an attic to prevent insulation and debris from accumulating near the chimney.

**Roof Flashings** - Select the proper flashing based on the pitch of the roof. Note: a 6/12 pitch has a vertical rise of 6 inches over a horizontal distance of 12 inches. Steep roof flashings are available to accommodate pitches up to 24/12.

**Chimney Caps** - Chimney caps are made from stainless steel and include spark arrestor screens.

**Storm Collars** - The storm collar slips around the pipe just above the flashing. Seal the inner edge to the chimney with a non-hardening 500° high temperature sealant.

**Extended Roof Bracket** - Use to support the chimney when it extends more than 4 feet above the roof. Install with 3/4" thin-wall galvanized electrical conduit. Conduit not included.

**Wall Strap** - For use in interior or exterior installations to support and stabilize the chimney while assuring a 2" clearance. Wall straps are required every four feet on exterior of building only.

**Snap-Lock Adapter** - Snaps into the ceiling support box and extends down to fit inside most stovepipe for a drip-free connection to a DuraPlus Chimney system. Painted black. Not a U.L. listed product.

**Elbow Strap** - Elbow straps are required between two elbows to support the weight of the chimney.

**Base Plate** - Zero-clearance fireplace adapter. The base plate is to be used on a zero-clearance fireplace when using DuraPlus directly off the unit.

**Masonry Anchor Plate** - Provides a base for beginning the installation on the top of a masonry fireplace. Factory built chimney's low weight reduces footing requirements and ensures fastest installation time.

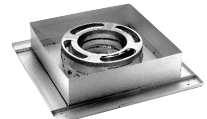
**Transition Anchor Plate** - Provides easy installation of Duraliner and DuraPlus combinations, as well as DuraPlus installation on masonry fireplaces and chimneys.



Wall Thimble



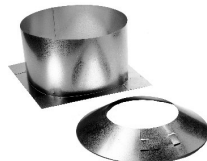
Round Ceiling Support Box



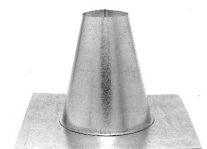
Flat Ceiling Support Box



Firestop Radiation Shield



Attic Insulation Shield



Flat Roof Flashing

For same day shipping, place order by: 1pm (CO), 2pm (CA, WA) and 11am (MN, TX). Give us a call at 1-800-682-9722

Stock: Y = Stock, N or \* = Non-Stock, LTSD = Limited to Stock on Hand

Non-Stock Item Notice: Items marked non-stock must be ordered in case quantities

## Wood Chimney & Pipe

### M & G Dura-Vent

6" DuraPlus 2100° F Chimney System (6" I.D. - 10" O.D.)

**DuraVent**  
Member of M&G Group

To calculate the installed length of DuraPlus or Dura-Chimney pipe lengths, subtract 1-1/2" from each length of chimney pipe.

#### 6" Chimney Lengths

Item No.	Description	Pkg.	Wt.	Retail	Stocked
SD6DP12	12" Chimney Section	1	7 lbs.	\$207.91	Y
SD6DP09	9" Chimney Section	1	6 lbs.	182.18	Y
SD6DP36SS	36" Stainless Chimney Section	1	15 lbs.	464.84	Y
SD6DP36	36" Chimney Section	1	18 lbs.	434.21	Y
SD6DP24	24" Chimney Section	1	12 lbs.	306.84	Y
SD6DP24SS	24" Stainless Chimney Section	1	12 lbs.	358.74	Y

#### 6" Tees and Elbows

SD6DPE15	15° Elbow Kit: 2 Elbows & 1 Elbow Strap	1	5 lbs.	\$728.80	Y
SD6DPE15KSS	15° Stainless Elbow Kit: 2 Elbows & 1 Elbow Strap	1	5 lbs.	1,006.69	N
SD6DPE30	(SD6DPE30K) 30° Elbow Kit: 2 Elbows & 1 Elbow Strap	1	13 lbs.	969.32	Y
SD6DPE30KSS	30° Stainless Elbow Kit: 2 Elbows & 1 Elbow Strap	1	6 lbs.	1,343.15	N
SD6DPTSS	Stainless Tee with Cap	1	10 lbs.	657.71	N
SD6DPT	Tee with Cap	1	10 lbs.	588.86	Y

#### 6" Supports

SD6DPRCS	Round Ceiling Support Cover	1	9 lbs.	\$301.52	Y
SD6DPFCS	Flat Ceiling Support (Unfinished)	1	6 lbs.	205.03	Y
SD6DPCS11	11" Support Box w/Trim Collar	1	10 lbs.	234.16	Y
SD6DPCS24	24" Support Box w/Trim Collar	1	14 lbs.	262.36	Y
SD6DPCS36	36" Support Box w/Trim Collar	1	19 lbs.	549.06	Y
SD6DPTSB	Tee Support Bracket	1	9 lbs.	246.93	Y
SD6DPTSBSS	Stainless Tee Support Bracket	1	9 lbs.	484.47	N

#### 6" Firestop

SD6DPWT	Wall Thimble	1	8 lbs.	\$189.04	Y
SD6DPWTSS	Stainless Wall Thimble	1	7 lbs.	246.10	N
SD6DPFRS	Firestop Radiation Shield	1	8 lbs.	183.32	Y
SD6DPIS	6"-8" Attic Insulation Shield	1	9 lbs.	204.37	Y
SD6DPCCS36	Close Clearance Shield, 3'	1 set	13 lbs.	343.16	N
SD6DPCCS48	Close Clearance Shield, 4'	1 set	19 lbs.	224.26	N
SD6DPCCS60	Close Clearance Shield, 5'	1 set	21 lbs.	1,812.28	N

#### 6" Caps and Flashings

SD6DPF6	Adj. Flashing 0/12-6/12 Ventilated	1	4 lbs.	\$161.63	Y
SD6DPF12	Adj. Flashing 7/12-12/12 Ventilated	1	8 lbs.	272.84	Y
SD6DPFF	Flat Roof Flashing (Tall Cone) Ventilated	1	7 lbs.	174.92	Y
SD6DPF24	Adj. Flashing 19/12-24/12 Ventilated	1	14 lbs.	622.81	Y
SD6DPF18	Adj. Flashing 13/12-18/12 Ventilated	1	14 lbs.	1,029.49	Y
SD6DPVC	Chimney Cap with Spark Arrestor	1	5 lbs.	209.71	Y
SD6DPSC	6"-8" Storm Collar	10	11 lbs.	34.67	Y

#### 6" Accessories

SD6DTCAI	Chase Air Intake w/Rodent Guard	1	3 lbs.	\$298.80	N
SD6DPBP	Base Plate	1	4 lbs.	124.89	N
SD6DPES	Elbow Strap	2	5 lbs.	91.15	Y
SD6DPXRB	Extended Roof Bracket	1	3 lbs.	288.70	Y
SD6DPWS	Wall Strap	2	4 lbs.	76.28	Y
SD6DPWSSS	Stainless Wall Strap	2	4 lbs.	95.04	N
SD6DPSS	Starter Section	1	4 lbs.	436.67	N



Length



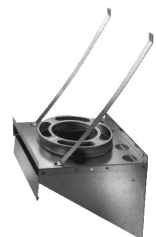
15° Elbow



30° Elbow



Tee with Cap



Tee Support Bracket

For same day shipping, place order by: 1pm (CO), 2pm (CA, WA) and 11am (MN, TX). Give us a call at 1-800-682-9722

Stock: Y = Stock, N or \* = Non-Stock, LTSD = Limited to Stock on Hand

Non-Stock Item Notice: Items marked non-stock must be ordered in case quantities

## Wood Chimney & Pipe

### M & G Dura-Vent

7" DuraPlus 2100° F Chimney System (7" I.D. - 11" O.D.)

**DuraVent**  
Member of M&G Group

To calculate the installed length of DuraPlus or Dura-Chimney pipe lengths, subtract 1-1/2" from each length of chimney pipe.

#### 7" Chimney Lengths

Item No.	Description	Pkg.	Wt.	Retail	Stocked
SD7DP06	6" Chimney Section	1	5 lbs.	\$192.41	N
SD7DP12	12" Chimney Section	1	8 lbs.	264.10	N
SD7DP09	9" Chimney Section	1	6 lbs.	221.65	N
SD7DP36SS	36" Stainless Chimney Section	1	19 lbs.	656.49	N
SD7DP36	36" Chimney Section	1	19 lbs.	517.72	N
SD7DP24	24" Chimney Section	1	13 lbs.	391.26	N
SD7DP24SS	24" Stainless Chimney Section	1	12 lbs.	478.40	N

#### 7" Tees and Elbows

SD7DPE15	15° Elbow Kit: 2 Elbows & 1 Elbow Strap	1	6 lbs.	\$884.27	N
SD7DPE15KSS	15° Stainless Elbow Kit: 2 Elbows & 1 Elbow Strap	1	6 lbs.	1,221.74	N
SD7DPE30	(SD7DPE30K) 30° Elbow Kit: 2 Elbows & 1 Elbow Strap	1	7 lbs.	1,124.79	N
SD7DPE30KSS	30° Stainless Elbow Kit: 2 Elbows & 1 Elbow Strap	1	7 lbs.	1,541.69	N
SD7DPT	Tee with Cap	1	14 lbs.	721.30	N
SD7DPTSS	Stainless Tee with Cap	1	13 lbs.	792.68	N

#### 7" Supports

SD7DPRCS	Round Ceiling Support Cover with Trim Collar	1	9 lbs.	\$514.74	N
SD7DPFCS	Flat Ceiling Support (Unfinished)	1	6 lbs.	446.11	N
SD7DPCS11	11" Support Box w/Trim Collar	1	10 lbs.	480.43	N
SD7DPCS24	24" Support Box w/Trim Collar	1	15 lbs.	583.38	N
SD7DPCS36	36" Support Box w/Trim Collar	1	20 lbs.	679.47	N
SD7DPTSB	Tee Support Bracket	1	11 lbs.	279.00	N
SD7DPTSBSS	Stainless Tee Support Bracket	1	10 lbs.	484.47	N

#### 7" Firestop

SD7DPWT	Wall Thimble	1	8 lbs.	\$494.97	N
SD7DPWTSS	Stainless Wall Thimble	1	7 lbs.	272.67	N
SD7DPFRS	Firestop Radiation Shield	1	8 lbs.	229.15	N
SD6DPIS	6"-8" Attic Insulation Shield	1	9 lbs.	204.37	Y
SD6DPCCS36	Close Clearance Shield, 3'	1 set	13 lbs.	343.16	N
SD6DPCCS48	Close Clearance Shield, 4'	1 set	19 lbs.	224.26	N
SD6DPCCS60	Close Clearance Shield, 5'	1 set	21 lbs.	1,812.28	N

#### 7" Caps and Flashings

SD7DPF6	Adj. Flashing 0/12-6/12 Ventilated	1	4 lbs.	\$181.75	N
SD7DPF12	Adj. Flashing 7/12-12/12 Ventilated	1	9 lbs.	823.58	N
SD7DPFF	Flat Roof Flashing (Tall Cone) Ventilated	1	7 lbs.	329.96	N
SD7DPF24	Adj. Flashing 19/12-24/12 Ventilated	1	7 lbs.	685.96	N
SD7DPF18	Adj. Flashing 13/12-18/12 Ventilated	1	14 lbs.	463.19	N
SD7DPVC	Chimney Cap	1	6 lbs.	280.30	N
SD6DPSC	6"-8" Storm Collar	10	11 lbs.	34.67	Y

#### 7" Accessories

SD6DTCAI	Chase Air Intake w/Rodent Guard	1	3 lbs.	\$298.80	N
SD7DPBP	Base Plate	1	4 lbs.	TBD	N
SD7DPES	Elbow Strap	2	5 lbs.	TBD	N
SD7DPXRB	Extended Roof Bracket	1 set	3 lbs.	TBD	N
SD7DPWS	Wall Strap	2	5 lbs.	102.95	N
SD7DPWSSS	Stainless Wall Strap	2	4 lbs.	102.39	N



Length



15° Elbow



30° Elbow



Tee with Cap



Tee Support Bracket

For same day shipping, place order by: 1pm (CO), 2pm (CA, WA) and 11am (MN, TX). Give us a call at 1-800-682-9722

Stock: Y = Stock, N or \* = Non-Stock, LTSD = Limited to Stock on Hand

Non-Stock Item Notice: Items marked non-stock must be ordered in case quantities



## Wood Chimney & Pipe

### M & G Dura-Vent

8" DuraPlus 2100° F Chimney System (8" I.D. - 12" O.D.)

**DuraVent**  
Member of M&G Group

To calculate the installed length of DuraPlus or Dura-Chimney pipe lengths, subtract 1-1/2" from each length of chimney pipe.

#### 8" Chimney Lengths

Item No.	Description	Pkg.	Wt.	Retail	Stocked
SD8DP06	6" Chimney Section	1	5 lbs.	\$244.15	Y
SD8DP12	12" Chimney Section	1	9 lbs.	330.02	Y
SD8DP36SS	36" Stainless Chimney Section	1	21 lbs.	691.89	N
SD8DP36	36" Chimney Section	1	22 lbs.	633.26	Y
SD8DP09	9" Chimney Section	1	7 lbs.	277.37	Y
SD8DP24	24" Chimney Section	1	15 lbs.	448.96	Y
SD8DP24SS	24" Stainless Chimney Section	1	14 lbs.	598.01	N

#### 8" Tees and Elbows

SD8DPE15	15° Elbow Kit: 2 Elbows & 1 Elbow Strap	1	7 lbs.	\$917.37	Y
SD8DPE15KSS	15° Stainless Elbow Kit: 2 Elbows & 1 Elbow Strap	1	7 lbs.	1,340.83	N
SD8DPE30K	30° Elbow Kit: 2 Elbows & 1 Elbow Strap	1	7 lbs.	1,177.72	Y
SD8DPE30KSS	30° Stainless Elbow Kit: 2 Elbows & 1 Elbow Strap	1	7 lbs.	1,654.15	N
SD8DPT	Tee with Cap	1	14 lbs.	844.37	N
SD8DPTSS	Stainless Tee with Cap	1	14 lbs.	934.01	N

#### 8" Supports

SD8DPRCS	Round Ceiling Support Box	1	9 lbs.	\$398.08	N
SD8DPFCS	Flat Ceiling Support Box (Unfinished)	1	7 lbs.	221.92	N
SD8DPCS11	11" Square Ceiling Support Box w/Trim Collar	1	10 lbs.	317.15	Y
SD8DPCS24	24" Square Ceiling Support Box w/Trim Collar	1	15 lbs.	345.12	Y
SD8DPCS36	36" Square Ceiling Support Box w/Trim Collar	1	20 lbs.	536.88	Y
SD8DPTSB	Tee Support Bracket	1	10 lbs.	306.82	N
SD8DPTSSB	Stainless Tee Support Bracket	1	12 lbs.	484.47	N

#### 8" Firestop

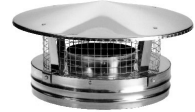
SD8DPWT	Wall Thimble	1	8 lbs.	\$243.37	Y
SD8DPWTSS	Stainless Wall Thimble	1	7 lbs.	282.34	N
SD8DPFRS	Firestop Radiation Shield	1	7 lbs.	205.03	Y
SD6DPIS	6"-8" Attic Insulation Shield	1	9 lbs.	204.37	Y
SD6DPCCS36	Close Clearance Shield, 3'	1 set	13 lbs.	343.16	N
SD6DPCCS48	Close Clearance Shield, 4'	1 set	19 lbs.	224.26	N
SD6DPCCS60	Close Clearance Shield, 5'	1 set	21 lbs.	1,812.28	N

#### 8" Caps and Flashings

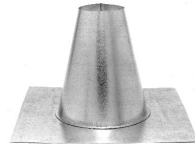
SD8DPF6	Adj. Flashing 0/12-6/12 Ventilated	1	5 lbs.	\$223.33	Y
SD8DPF12	Adj. Flashing 7/12-12/12 Ventilated	1	10 lbs.	372.79	Y
SD8DPFF	Flat Roof Flashing (Tall Cone) Ventilated	1	7 lbs.	262.56	N
SD8DPF24	Adj. Flashing 19/12-24/12 Ventilated	1	13 lbs.	726.91	N
SD8DPF18	Adj. Flashing 13/12-18/12 Ventilated	1	14 lbs.	503.29	N
SD8DPVC	Chimney Cap with Spark Arrestor	1	6 lbs.	315.12	Y
SD6DPSC	6"-8" Storm Collar	10	11 lbs.	34.67	Y

#### 8" Accessories

SD6DTCAI	Chase Air Intake w/Rodent Guard	1	3 lbs.	\$298.80	N
SD8DPBP	Base Plate	1	10 lbs.	183.75	Y
SD8DPES	Elbow Strap	2	9 lbs.	101.75	N
SD8DPXRB	Extended Roof Bracket	1 set	4 lbs.	305.07	Y
SD8DPWS	Wall Strap	2	9 lbs.	95.88	Y
SD8DPWSSS	Stainless Wall Strap	2	4 lbs.	164.72	N



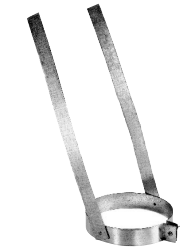
Chimney Cap



Flat Roof Flashing



Storm Collar



Elbow Strap



Wall Strap



Extended Roof Bracket



Base Plate

For same day shipping, place order by: 1pm (CO), 2pm (CA, WA) and 11am (MN, TX). Give us a call at 1-800-682-9722

Stock: Y = Stock, N or \* = Non-Stock, LTSD = Limited to Stock on Hand

Non-Stock Item Notice: Items marked non-stock must be ordered in case quantities

## Wood Chimney & Pipe

### M & G Dura-Vent

Duratech Chimney Systems - 5" Diameter

**DuraVent**  
Member of M&G Group

#### 5" Chimney Lengths

Item No.	Description	Pkg.	Wt.	Retail	Stocked
SD5DT06SS	6" Chimney Pipe - Stainless	1	2.3 lbs.	\$140.02	N
SD5DT09B	9" Chimney Pipe - Black	1	2.3 lbs.	196.59	N
SD5DT12SS	12" Chimney Pipe - Stainless	1	4.3 lbs.	240.20	Y
SD5DT18SS	18" Chimney Pipe - Stainless	1	6.6 lbs.	343.16	Y
SD5DT24SS	24" Chimney Pipe - Stainless	1	8.8 lbs.	446.11	Y
SD5DT24SSCF	24" Chimney Pipe - Stainless (CF)	1	8.8 lbs.	315.50	N
SD5DT36SS	36" Chimney Pipe - Stainless	1	11.6 lbs.	375.90	Y
SD5DT36SSCF	36" Chimney Pipe - Stainless (CF)	1	12.9 lbs.	402.21	N
SD5DT48SS	48" Chimney Pipe - Stainless	1	15.7 lbs.	493.82	N
SD5DT48SSCF	48" Chimney Pipe - Stainless (CF)	1	19.2 lbs.	528.40	N
SD5DT60SSCF	60" Chimney Pipe - Stainless (CF)	1	15.7 lbs.	613.86	N

#### 5" Elbows and Tees

SD5DTE15KSS	15° Elbow Kit - Stainless 2 Elbows & 1 Elbow Strap	1	8.5 lbs.	\$898.02	N
SD5DTE30KSS	30° Elbow Kit - Stainless 2 Elbows & 1 Elbow Strap	1	6.7 lbs.	1,108.55	Y
SD5DTTSS	Tee w/Cap - Stainless	1	5.8 lbs.	582.30	N
SD5DTSTSS	Standard Tee w/Cap - Stainless	1	N/A	582.29	Y
SD5DTTCO	Tee Cap	1	1.7 lbs.	125.20	N

#### 5" Supports

SD5DTCS11	11" Square Ceiling Support Box (SD5DTCS112)	1	8.4 lbs.	\$585.02	N
SD5DTCS24	24" Square Ceiling Support Box	1	12.6 lbs.	660.39	N
SD5DTCS36	36" Square Ceiling Support Box	1	17 lbs.	423.81	N
SD5DTRCS	Round Ceiling Support Box	1	4 lbs.	402.73	N
SD5DTFCS	Flat Ceiling Support Box	1	6 lbs.	948.36	N
SD5DTARS	Adjustable Roof Support	1	6.2 lbs.	178.45	Y
SD5DTRSTC3	Trim Collar for Roof Support 0/12 - 3/12	1	2.3 lbs.	171.59	N
SD5DTTSB	Adjustable Tee Support Bracket - Galvalume	1	14 lbs.	277.15	N
SD5DTTSBSS	Adjustable Tee Support Bracket - Stainless	1	5.3 lbs.	528.40	N
SD5DTRES	Adjustable Re-Support	1	N/A	157.02	N
SD5DTAWS	Adjustable Wall Support	1	1.8 lbs.	114.21	Y
SD5DTAWSSS	Adjustable Wall Support - Stainless	1	1.8 lbs.	164.17	N
SD5DTXWS	Extended Wall Support	1	N/A	264.10	Y
SD5DTXWSSS	Extended Wall Support - Stainless	1	9.5 lbs.	428.26	N

For same day shipping, place order by: 1pm (CO), 2pm (CA, WA) and 11am (MN, TX). Give us a call at 1-800-682-9722

Stock: Y = Stock, N or \* = Non-Stock, LTSD = Limited to Stock on Hand

Non-Stock Item Notice: Items marked non-stock must be ordered in case quantities



## Wood Chimney & Pipe

### M & G Dura-Vent

Duratech Chimney Systems - 5" Diameter

**DuraVent**  
Member of & M&G Group

2  
0  
2  
5  
-  
2  
0  
2  
6

5" Firestop					
Item No.	Description	Pkg.	Wt.	Retail	Stocked
SD5DTWT	Wall Thimble	1	2.3 lbs.	\$274.52	N
SD5DTIWT	Insulated Wall Thimble	1	N/A	325.84	N
SD5DTFRS	Firestop Radiation Shield	1	6.2 lbs.	184.78	N
SD5DTIS	Attic Insulation Shield	1	4.8 lbs.	180.59	N
SD5DTRRS	Roof Radiation Shield	1	N/A	203.85	Y
5" Caps and Flashings					
SD5DTCTF	Chase Top Flashing	1	2.2 lbs.	\$121.61	N
SD5DTF6	Adjustable Roof Flashing 0/12 - 6/12	4	24.2 lbs.	189.76	Y
SD5DTF12	Adjustable Roof Flashing 7/12 - 12/12	1	10.5 lbs.	217.44	N
SD5DTF18	Adjustable Roof Flashing 13/12 - 18/12	1	10 lbs.	320.64	N
SD5DTF24	Adjustable Roof Flashing 19/12 - 24/12	1	10 lbs.	436.73	N
SD5DTFF	Flat Roof Flashing	4	64.4 lbs.	222.95	N
5" Caps and Flashings					
SD5DTVC	Chimney Cap	1	3 lbs.	\$199.00	Y
SD5DTSC	Storm Collar	10	6 lbs.	34.96	Y
5" Accessories					
SD5DTES	Diameter Elbow Strap	1	1.4 lbs.	\$152.94	N
SD5DTAES	Adjustable Elbow Support	1	N/A	107.07	Y
SD5DTTC	Trim Collar for Round Support Box - Square	1	1.9 lbs.	110.52	N
SD5DTTCR	Trim Collar for Round Support Box - Round	1	1.9 lbs.	116.04	N
SD5DTRSTC3	Trim Collar for Roof Support 0/12 - 3/12	1	2.3 lbs.	171.59	N
SD5DTRSTC6	Trim Collar for Roof Support 4/12 - 6/12	1	2.3 lbs.	143.71	N
SD5DTRSTC9	Trim Collar for Roof Support 7/12 - 9/12	1	2.3 lbs.	143.71	N
SD5DTRSTC12	Trim Collar for Roof Support 10/12 - 12/12	1	2.3 lbs.	143.71	N
SD5DTAWSX	DT Extended Adj Wall Strap	1	1.8 lbs.	214.49	N
SD5DTAWSXSS	DT Extended Adj Wall Strap Stainless	1	1.8 lbs.	270.67	N
SD5DTFC	Finishing Collar w/adaptor	1	1 lbs.	164.72	N
SD5DTAP	Anchor Plate	1	2 lbs.	205.91	N
SD5DTXRS	Extended Roof Bracket	1	N/A	256.95	Y
SD5DTLB	Locking Band	24	2.4 lbs.	22.04	Y
SD5DTWSSS	Adjustable Wall Strap - SS	1	1.2 lbs.	178.43	N
SD5DTSA	Spark Arrestor	1	3.3 lbs.	42.46	Y
SD5DTFS	Firestop	1	2 lbs.	116.15	N

For same day shipping, place order by: 1pm (CO), 2pm (CA, WA) and 11am (MN, TX). Give us a call at 1-800-682-9722

Stock: Y = Stock, N or \* = Non-Stock, LTSD = Limited to Stock on Hand

Non-Stock Item Notice: Items marked non-stock must be ordered in case quantities

## Wood Chimney & Pipe

### M & G Dura-Vent

Duratech Chimney Systems - 6" Diameter

**DuraVent**  
Member of & M&G Group

#### 6" Chimney Lengths

Item No.	Description	Pkg.	Wt.	Retail	Stocked
SD6DT06SS	6" Chimney Pipe - Stainless	1	2.7 lbs.	\$160.29	Y
SD6DT06B	6" Chimney Pipe - Black	1	2.8 lbs.	208.20	N
SD6DT06	6" Chimney Pipe - Galvalume	1	2.8 lbs.	123.44	Y
SD6DT09B	9" Chimney Pipe - Black	1	4 lbs.	232.16	N
SD6DT09SS	9" Chimney Pipe - Stainless	1	4 lbs.	171.35	Y
SD6DT09	9" Chimney Pipe - Galvalume	1	4 lbs.	152.94	Y
SD6DT12B	12" Chimney Pipe - Black	1	5.6 lbs.	246.91	N
SD6DT12SS	12" Chimney Pipe - Stainless	1	5.0 lbs.	182.42	Y
SD6DT12	12" Chimney Pipe - Galvalume	1	5.6 lbs.	180.59	Y
SD6DT18SS	18" Chimney Pipe - Stainless	1	8.2 lbs.	248.77	Y
SD6DT18	18" Chimney Pipe - Galvalume	1	8.6 lbs.	228.47	Y
SD6DT24SS	24" Chimney Pipe - Stainless	1	9.9 lbs.	331.67	Y
SD6DT24SSCF	24" Chimney Pipe - Stainless (CF)	1	11 lbs.	354.87	N
SD6DT24	24" Chimney Pipe - Galvalume	1	10.5 lbs.	289.33	Y
SD6DT24CF	24" Chimney Pipe - Galvalume (CF)		10.5 lbs.	309.52	N
SD6DT36SS	36" Chimney Pipe - Stainless	1	14 lbs.	442.22	Y
SD6DT36SSCF	36" Chimney Pipe - Stainless (CF)	1	15 lbs.	473.17	Y
SD6DT36	36" Chimney Pipe - Galvalume	1	14.6 lbs.	379.58	Y
SD6DT36CF	36" Chimney Pipe - Galvalume (CF)	1	16.6 lbs.	406.13	N
SD6DT48SS	48" Chimney Pipe - Stainless	1	18.7 lbs.	569.52	Y
SD6DT48SSCF	48" Chimney Pipe - Stainless (CF)	1	30 lbs.	609.28	N
SD6DT48	48" Chimney Pipe - Galvalume	1	20 lbs.	469.86	Y
SD6DT48CF	48" Chimney Pipe - Galvalume (CF)	1	20 lbs.	502.79	N
SD6DT60SSCF	60" Chimney Pipe - Stainless (CF)	1	26 lbs.	723.16	N
SD6DT60CF	60" Chimney Pipe - Galvalume (CF)	1	26 lbs.	588.60	N
SD6DT21TASS	Adjustable Pipe 14" - 21"	1	10 lbs.	547.89	Y

#### 6" Elbows and Tees

SD6DTE15KSS	15° Elbow Kit - Stainless 2 Elbows & 1 Elbow Strap	1	9 lbs.	\$875.03	Y
SD6DTE30KSS	30° Elbow Kit - Stainless 2 Elbows & 1 Elbow Strap	1	9 lbs.	1,166.63	Y
SD6DTE30K	30° Elbow Kit - Galvalume 2 Elbows & 1 Elbow Strap	1	9 lbs.	847.82	Y
SD6DTST	Standard Tee w/Cap - Galvalume	1	1.3 lbs.	473.61	Y
SD6DTSTSS	Standard Tee w/Cap - Stainless	1	1.1 lbs.	624.70	Y
SD6DTTCO	Tee Cap	1	N/A	134.75	N

#### 6" Supports

SD6DTCS112	11" Square Ceiling Support Box <b>NEW</b>	1	8.5 lbs.	366.62	Y
SD6DTCS242	24" Square Ceiling Support Box <b>NEW</b>	1	12.6 lbs.	406.70	Y
SD6DTCS24R2	24" Square Ceiling Support Box (Reduced Clearance) <b>NEW</b>	1	12.6 lbs.	383.12	Y
SD6DTCS24IS2	24" Square Ceiling Support Box with Attic Insulation Shield <b>NEW</b>	1	N/A	456.21	N
SD6DTCS24RIS	24" Reduced Square Ceiling Support Box with Attic Insulation Shield	1	N/A	414.85	LTSD
SD6DTCS24RIS2	24" Reduced Square Ceiling Support Box with Attic Insulation Shield <b>NEW</b>	1	N/A	434.99	Y
SD6DTCS36	36" Square Ceiling Support Box	1	18.2 lbs.	428.21	LTSD
SD6DTCS362	36" Square Ceiling Support Box <b>NEW</b>	1	18.2 lbs.	449.14	N

For same day shipping, place order by: 1pm (CO), 2pm (CA, WA) and 11am (MN, TX). Give us a call at 1-800-682-9722

Stock: Y = Stock, N or \* = Non-Stock, LTSD = Limited to Stock on Hand

Non-Stock Item Notice: Items marked non-stock must be ordered in case quantities

## Wood Chimney & Pipe

### M & G Dura-Vent

Duratech Chimney Systems - 6" Diameter

**DuraVent**  
Member of M&G Group

2  
0  
2  
5  
-  
2  
0  
2  
6

6" Supports					
Item No.	Description	Pkg.	Wt.	Retail	Stocked
SD6DTC36IS	36" Square Ceiling Support Box with Attic Insulation Shield	1	N/A	\$475.07	LTSD
SD6DTC36IS2	36" Square Ceiling Support Box with Attic Insulation Shield <b>NEW</b>	1	N/A	498.65	N
SD6DTRCS	Round Ceiling Support Box	1	4 lbs.	183.02	LTSD
SD6DTRCS2	Round Ceiling Support Box <b>NEW</b>	1	4 lbs.	212.19	Y
SD6DTFCS2	Flat Ceiling Support Box <b>NEW</b>	1	9.3 lbs.	248.73	Y
SD6DTARS	Adjustable Roof Support	1	5.4 lbs.	178.43	Y
SD6DTRSTC3	Trim Collar for Roof Support 0/12 - 3/12	1	2.2 lbs.	145.51	N
SD6DTTSB	Adjustable Tee Support Bracket - Galvalume	1	10 lbs.	235.85	Y
SD6DTTSBSS	Adjustable Tee Support Bracket - Stainless	1	10 lbs.	573.09	Y
SD6DTRES	Adjustable Re-Support	1	N/A	157.02	Y
SD6DTAWS	Adjustable Wall Support	1	2.2 lbs.	114.21	Y
SD6DTAWSSS	Adjustable Wall Support - Stainless	1	N/A	164.17	Y
SD6DTXWS	Extended Wall Support	1	N/A	264.10	Y
SD6DTXWSSS	Extended Wall Support - Stainless	1	9.6 lbs.	428.26	Y
6" Firestop					
SD6DTWT	Wall Thimble	1	5.6 lbs.	\$186.08	Y
SD6DTIWT	Insulated Wall Thimble	1	N/A	225.13	N
SD6DTFRS	Firestop Radiation Shield	1	6.9 lbs.	145.51	Y
SD6DTIS	Attic Insulation Shield	1	6.6 lbs.	189.76	Y
SD6DTRRS	Roof Radiation Shield	1	3 lbs.	203.85	Y
6" Caps and Flashings					
SD6DTCTF	Chase Top Flashing	1	2.2 lbs.	\$125.27	N
SD6DTF6	Adjustable Roof Flashing 0/12 - 6/12	4	10.4 lbs.	193.42	Y
SD6DTF12	Adjustable Roof Flashing 7/12 - 12/12	1	2.6 lbs.	250.60	Y
SD6DTF18	Adjustable Roof Flashing 13/12 - 18/12	1	10.8 lbs.	372.24	N
SD6DTF24	Adjustable Roof Flashing 19/12 - 24/12	1	10 lbs.	506.74	N
SD6DTFF	Flat Roof Flashing	4	10.5 lbs.	259.83	Y
SD6DTF6DSA	DSA Roof Flashing	4	2.6 lbs.	269.20	Y
SD6DTF12DSA	DSA Roof Flashing	1	2.6 lbs.	429.54	N
SD6DTF6L	Large Base Adjustable Roof Flashing 0/12 - 6/12	1	2.6 lbs.	257.94	Y
SD6DTF12L	Large Base Adjustable Roof Flashing 7/12 - 12/12	1	2.5 lbs.	342.74	N
6" Caps and Flashings					
SD6DTVC	Chimney Cap	1	3.3 lbs.	211.89	Y
SD5DTSC	Storm Collar	10	6 lbs.	34.96	Y
6" Accessories					
SD6DTES	Diameter Elbow Strap	1	1.6 lbs.	\$162.12	Y
SD6DTAES	Adjustable Elbow Support	1	1.6 lbs.	107.07	Y
SD5DTTC	Trim Collar for Round Support Box - Square	1	1.9 lbs.	110.52	N
SD5DTTCR	Trim Collar for Round Support Box - Round	1	1.9 lbs.	116.04	N
SD6DTRSTC3	Trim Collar for Roof Support 0/12 - 3/12	1	2.2 lbs.	145.51	N
SD6DTRSTC6	Trim Collar for Roof Support 4/12 - 6/12	1	2.2 lbs.	145.51	Y
SD6DTRSTC9	Trim Collar for Roof Support 7/12 - 9/12	1	2.2 lbs.	145.51	Y

For same day shipping, place order by: 1pm (CO), 2pm (CA, WA) and 11am (MN, TX). Give us a call at 1-800-682-9722

Stock: Y = Stock, N or \* = Non-Stock, LTSD = Limited to Stock on Hand

Non-Stock Item Notice: Items marked non-stock must be ordered in case quantities

## Wood Chimney & Pipe

### M & G Dura-Vent

Duratech Chimney Systems - 6" Diameter

**DuraVent**  
Member of  M&G Group

6" Accessories					
<i>Item No.</i>	<i>Description</i>	<i>Pkg.</i>	<i>Wt.</i>	<i>Retail</i>	<i>Stocked</i>
SD6DTRSTC12	Trim Collar for Roof Support 10/12 - 12/12	1	2.2 lbs.	\$145.51	N
SD6DTAWSX	DT Extended Adj Wall Strap	1	2.2 lbs.	214.49	N
SD6DTAWSXSS	DT Extended Adj Wall Strap Stainless	1	2.2 lbs.	264.63	N
SD6DTFC	Finishing Collar w/adaptor	1	1.3 lbs.	112.84	Y
SD6DTAP	Anchor Plate	1	2.2 lbs.	151.08	Y
SD6DTXRS	Extended Roof Bracket	1	N/A	256.95	Y
SD6DTLB	Locking Band	24	3 lbs.	23.93	Y
SD6DTWS	Adjustable Wall Strap - GA	1	3 lbs.	97.65	Y
SD6DTWSSS	Adjustable Wall Strap - SS	1	1.2 lbs.	171.35	Y
SD5DTSA	Spark Arrestor	1	3.3 lbs.	42.46	Y
SD6DTFS	Firestop	1	2.3 lbs.	130.67	N
SD6DTWTSS	Wall Thimble Exterior Trim - Stainless	1	1.4 lbs.	108.09	N
SD6DTAP14x17	Transition Anchor Plate 14" x 17"	1	8.7 lbs.	785.42	N
SD6DTAP17x17	Transition Anchor Plate 17" x 17"	1	9.8 lbs.	792.56	Y
SD6DTAP13x21	Transition Anchor Plate 13" x 21"	1	9.8 lbs.	788.96	N
SD6DTAP17x21	Transition Anchor Plate 17" x 21"	1	9.8 lbs.	805.11	N
SD6DTSP	Snow Splitter 6"-10"	1	1.3 lbs.	283.25	Y
SD6DTSBRU	Support Box Rails	1	N/A	75.26	N
SD6DTCAI	Chase Air Intake w/ Rodent Guard	1	2.6 lbs.	298.80	N

For same day shipping, place order by: 1pm (CO), 2pm (CA, WA) and 11am (MN, TX). Give us a call at 1-800-682-9722

Stock: Y = Stock, N or \* = Non-Stock, LTSD = Limited to Stock on Hand

Non-Stock Item Notice: Items marked non-stock must be ordered in case quantities

## Wood Chimney & Pipe

### M & G Dura-Vent

Duratech Chimney Systems - 7" Diameter

**DuraVent**  
Member of M&G Group

2  
0  
2  
5  
-  
2  
0  
2  
6

7" Chimney Lengths					
Item No.	Description	Pkg.	Wt.	Retail	Stocked
SD7DT06SS	6" Chimney Pipe - Stainless	1	3.2 lbs.	\$343.16	Y
SD7DT06B	6" Chimney Pipe - Black	1	3.4 lbs.	232.88	N
SD7DT06	6" Chimney Pipe - Galvalume	1	3.4 lbs.	240.20	N
SD7DT09B	9" Chimney Pipe - Black	1	2.3 lbs.	237.71	N
SD7DT09SS	9" Chimney Pipe - Stainless	1	2.3 lbs.	243.25	Y
SD7DT09	9" Chimney Pipe - Galvalume	1	2.3 lbs.	329.96	N
SD7DT12B	12" Chimney Pipe - Black	1	6 lbs.	250.13	N
SD7DT12SS	12" Chimney Pipe - Stainless	1	5.8 lbs.	267.18	Y
SD7DT12	12" Chimney Pipe - Galvalume	1	6 lbs.	210.03	N
SD7DT18SS	18" Chimney Pipe - Stainless	1	8 lbs.	302.20	Y
SD7DT18	18" Chimney Pipe - Galvalume	1	8.8 lbs.	362.95	N
SD7DT24SS	24" Chimney Pipe - Stainless	1	10 lbs.	364.83	Y
SD7DT24SSCF	24" Chimney Pipe - Stainless (CF)	1	12 lbs.	390.39	N
SD7DT24	24" Chimney Pipe - Galvalume	1	11.7 lbs.	335.39	N
SD7DT24CF	24" Chimney Pipe - Galvalume (CF)	1	11.7 lbs.	358.85	N
SD7DT36SS	36" Chimney Pipe - Stainless	1	15.7 lbs.	569.41	Y
SD7DT36SSCF	36" Chimney Pipe - Stainless (CF)	1	18.2 lbs.	609.28	N
SD7DT36	36" Chimney Pipe - Galvalume	1	16.7 lbs.	469.86	N
SD7DT36CF	36" Chimney Pipe - Galvalume (CF)	1	20.2 lbs.	502.79	N
SD7DT48SS	48" Chimney Pipe - Stainless	1	20.5 lbs.	646.79	Y
SD7DT48SSCF	48" Chimney Pipe - Stainless (CF)	1	23.4 lbs.	692.06	N
SD7DT48	48" Chimney Pipe - Galvalume	1	21.5 lbs.	539.90	Y
SD7DT48CF	48" Chimney Pipe - Galvalume (CF)	1	20.6 lbs.	577.74	N
SD7DT60SSCF	60" Chimney Pipe - Stainless (CF)	1	26 lbs.	763.38	N
SD7DT60CF	60" Chimney Pipe - Galvalume (CF)	1	26 lbs.	613.86	N
7" Elbows and Tees					
SD7DTE15KSS	15° Elbow Kit - Stainless 2 Elbows & 1 Elbow Strap	1	19.7 lbs.	\$1,038.69	Y
SD7DTE15K	15° Elbow Kit - Galvalume 2 Elbows & 1 Elbow Strap	1	8.2 lbs.	872.01	N
SD7DTE30KSS	30° Elbow Kit - Stainless 2 Elbows & 1 Elbow Strap	1	2.3 lbs.	1,310.60	Y
SD7DTE30K	30° Elbow Kit - Galvalume 2 Elbows & 1 Elbow Strap	1	4.5 lbs.	956.11	N
SD7DTST	Standard Tee w/Cap - Galvalume	1	8 lbs.	617.70	N
SD7DTSTSS	Standard Tee w/Cap - Stainless	1	8 lbs.	820.01	Y
SD7DTTCCO	Tee Cap	1	N/A	145.20	N
7" Supports					
SD7DTCS112	11" Square Ceiling Support Box <b>NEW</b>	1	9.2 lbs.	\$383.12	N
SD7DTCS242	24" Square Ceiling Support Box <b>NEW</b>	1	18.8 lbs.	424.38	Y
SD7DTCS36	36" Square Ceiling Support Box	1	21 lbs.	783.60	LTSD
SD7DTCS362	36" Square Ceiling Support Box <b>NEW</b>	1	21 lbs.	471.53	N
SD7DTRCS	Round Ceiling Support Box	1	4.8 lbs.	522.92	LTSD
SD7DTRCS2	Round Ceiling Support Box <b>NEW</b>	1	4.8 lbs.	229.87	Y
SD7DTFCS2	Flat Ceiling Support Box <b>NEW</b>	1	9 lbs.	253.45	N
SD5DTARS	Adjustable Roof Support	1	6.2 lbs.	178.45	Y
SD7DTRSTC3	Trim Collar for Roof Support 0/12 - 3/12	1	2.6 lbs.	147.40	N
SD7DTTSB	Adjustable Tee Support Bracket - Galvalume	1	14.7 lbs.	294.85	N
SD7DTTSBSS	Adjustable Tee Support Bracket - Stainless	1	14.7 lbs.	611.89	Y

For same day shipping, place order by: 1pm (CO), 2pm (CA, WA) and 11am (MN, TX). Give us a call at 1-800-682-9722

Stock: Y = Stock, N or \* = Non-Stock, LTSD = Limited to Stock on Hand

Non-Stock Item Notice: Items marked non-stock must be ordered in case quantities

## Wood Chimney & Pipe

### M & G Dura-Vent

Duratech Chimney Systems - 7" Diameter

**DuraVent**  
Member of & M&G Group

7" Supports					
Item No.	Description	Pkg.	Wt.	Retail	Stocked
SD5DTRES	Adjustable Re-Support	1	N/A	\$157.02	N
SD5DTAWS	Adjustable Wall Support	1	1.8 lbs.	114.21	Y
SD5DTAWSSS	Adjustable Wall Support - Stainless	1	N/A	164.17	N
SD5DTXWS	Extended Wall Support	1	N/A	264.10	Y
SD5DTXWSSS	Extended Wall Support - Stainless	1	N/A	428.26	N
7" Firestop					
SD7DTWT	Wall Thimble	1	6.7 lbs.	\$377.47	Y
SD7DTIWT	Insulated Wall Thimble	1	N/A	444.33	N
SD7DTFRS	Firestop Radiation Shield	1	7.2 lbs.	226.49	Y
SD7DTIS	Attic Insulation Shield	1	7 lbs.	240.20	Y
SD7DTRRS	Roof Radiation Shield	1	5 lbs.	203.85	Y
7" Caps and Flashings					
SD7DTCTF	Chase Top Flashing	1	2.3 lbs.	\$150.98	N
SD7DTF6	Adjustable Roof Flashing 0/12 - 6/12	4	12 lbs.	221.12	Y
SD7DTF12	Adjustable Roof Flashing 7/12 - 12/12	1	7 lbs.	289.33	Y
SD7DTF18	Adjustable Roof Flashing 13/12 - 18/12	1	12.3 lbs.	427.50	N
SD7DTF24	Adjustable Roof Flashing 19/12 - 24/12	1	15.1 lbs.	574.92	N
SD7DTFF	Flat Roof Flashing	4	10.1 lbs.	300.34	Y
SD7DTF6L	Large Base Adjustable Roof Flashing 0/12 - 6/12	1	6.5 lbs.	300.34	N
7" Caps and Flashings					
SD7DTVC	Chimney Cap	1	5.1 lbs.	\$289.33	Y
SD7DTSC	Storm Collar	10	7 lbs.	38.65	Y
7" Accessories					
SD7DTES	Diameter Elbow Strap	1	3.9 lbs.	\$173.18	Y
SD5DTAES	Adjustable Elbow Support	1	N/A	107.07	Y
SD7DTTC	Trim Collar for Round Support Box - Square (SD7DTTC2)	1	2.1 lbs.	107.05	N
SD7DTTCR	Trim Collar for Round Support Box - Round (SD7DTTCR2)	1	2.1 lbs.	114.02	Y
SD7DTRSTC3	Trim Collar for Roof Support 0/12 - 3/12	1	2.6 lbs.	147.40	N
SD7DTRSTC6	Trim Collar for Roof Support 4/12 - 6/12	1	2.6 lbs.	147.40	N
SD7DTRSTC9	Trim Collar for Roof Support 7/12 - 9/12	1	2.6 lbs.	147.40	N
SD7DTRSTC12	Trim Collar for Roof Support 10/12 - 12/12	1	2.5 lbs.	147.40	N
SD7DTFC	Finishing Collar w/adaptor	1	1.5 lbs.	157.85	N
SD7DTAP	Anchor Plate	1	2.5 lbs.	189.76	N
SD5DTXRS	Extended Roof Bracket	1	N/A	256.95	Y
SD7DTLB	Locking Band	24	5.3 lbs.	25.79	Y
SD7DTWS	Adjustable Wall Strap - GA	1	1.9 lbs.	106.86	N
SD7DTWSSS	Adjustable Wall Strap - SS	1	1.8 lbs.	177.22	Y
SD5DTSA	Spark Arrestor	1	3.3 lbs.	42.46	Y
SD7DTFS	Firestop	1	2.3 lbs.	145.19	Y
SD7DTBT	Base Tee	1	5.5 lbs.	189.76	N

For same day shipping, place order by: 1pm (CO), 2pm (CA, WA) and 11am (MN, TX). Give us a call at 1-800-682-9722

Stock: Y = Stock, N or \* = Non-Stock, LTSD = Limited to Stock on Hand

Non-Stock Item Notice: Items marked non-stock must be ordered in case quantities



## Wood Chimney & Pipe

### M & G Dura-Vent

Duratech Chimney Systems - 8" Diameter

**DuraVent**  
Member of M&G Group

2  
0  
2  
5  
-  
2  
0  
2  
6

#### 8" Chimney Lengths

Item No.	Description	Pkg.	Wt.	Retail	Stocked
SD8DT06SS	6" Chimney Pipe - Stainless	1	3.5 lbs.	\$259.83	Y
SD8DT06B	6" Chimney Pipe - Black	1	3.8 lbs.	233.78	N
SD8DT06	6" Chimney Pipe - Galvalume	1	3.8 lbs.	141.85	Y
SD8DT09B	9" Chimney Pipe - Black	1	2.3 lbs.	241.33	N
SD8DT09SS	9" Chimney Pipe - Stainless	1	2.3 lbs.	281.73	Y
SD8DT09	9" Chimney Pipe - Galvalume	1	2.3 lbs.	178.70	Y
SD8DT12B	12" Chimney Pipe - Black	1	7.3 lbs.	291.14	N
SD8DT12SS	12" Chimney Pipe - Stainless	1	6.8 lbs.	326.13	Y
SD8DT12	12" Chimney Pipe - Galvalume	1	6.3 lbs.	215.58	Y
SD8DT18SS	18" Chimney Pipe - Stainless	1	9.4 lbs.	355.60	Y
SD8DT18	18" Chimney Pipe - Galvalume	1	11.1 lbs.	270.84	Y
SD8DT24SS	24" Chimney Pipe - Stainless	1	11.7 lbs.	421.95	Y
SD8DT24SSCF	24" Chimney Pipe - Stainless (CF)	1	13.2 lbs.	451.48	Y
SD8DT24	24" Chimney Pipe - Galvalume	1	12.6 lbs.	350.08	Y
SD8DT24CF	24" Chimney Pipe - Galvalume (CF)	1	13 lbs.	374.59	N
SD8DT36SS	36" Chimney Pipe - Stainless	1	17.6 lbs.	667.06	Y
SD8DT36SSCF	36" Chimney Pipe - Stainless (CF)	1	19.6 lbs.	713.75	N
SD8DT36	36" Chimney Pipe - Galvalume	1	18.6 lbs.	503.05	Y
SD8DT36CF	36" Chimney Pipe - Galvalume (CF)	1	20.5 lbs.	538.31	N
SD8DT48SS	48" Chimney Pipe - Stainless	1	25 lbs.	759.20	Y
SD8DT48SSCF	48" Chimney Pipe - Stainless (CF)	1	27 lbs.	812.34	Y
SD8DT48	48" Chimney Pipe - Galvalume	1	52.2 lbs.	578.58	Y
SD8DT48CF	48" Chimney Pipe - Galvalume (CF)	1	27 lbs.	619.09	N
SD8DT60SSCF	60" Chimney Pipe - Stainless (CF)	1	27 lbs.	850.06	N
SD8DT60CF	60" Chimney Pipe - Galvalume (CF)	1	25.2 lbs.	657.65	Y
SD8DT21TASS	Adjustable Pipe 14"-21"	1	13.7 lbs.	616.37	Y

#### 8" Elbows and Tees

SD8DTE15KSS	15° Elbow Kit - Stainless 2 Elbows & 1 Elbow Strap	1	10.4 lbs.	\$1,139.71	Y
SD8DTE15K	15° Elbow Kit - Galvalume 2 Elbows & 1 Elbow Strap	1	10.4 lbs.	898.32	N
SD8DTE30KSS	30° Elbow Kit - Stainless 2 Elbows & 1 Elbow Strap	1	9.5 lbs.	1,406.19	Y
SD8DTE30K	30° Elbow Kit - Galvalume 2 Elbows & 1 Elbow Strap	1	9.5 lbs.	1,024.78	Y
SD8DTST	Standard Tee w/Cap - Galvalume	1	11 lbs.	663.42	Y
SD8DTSTSS	Standard Tee w/Cap - Stainless	1	11 lbs.	926.90	Y
SD8DTTCO	Tee Cap	1	N/A	149.88	N

#### 8" Supports

SD8DTCS112	11" Square Ceiling Support Box	1	9.8 lbs.	\$400.80	N
SD8DTCS24	24" Square Ceiling Support Box (SD8DTCS242)	1	14.9 lbs.	426.44	Y
SD8DTCS36	36" Square Ceiling Support Box (SD8DTCS362)	1	21 lbs.	473.84	Y
SD8DTRCS	Round Ceiling Support Box (SD8DTRCS2)	1	4.3 lbs.	294.13	Y
SD8DTFCS	Flat Ceiling Support Box (SD8DTFCS2)	1	6.3 lbs.	245.66	Y
SD8DTRS	Roof Support	1	5.5 lbs.	TBD	Y
SD8DTTSB	Adjustable Tee Support Bracket - Galvalume	1	12.9 lbs.	342.74	Y
SD8DTTSBSS	Adjustable Tee Support Bracket - Stainless	1	12.6 lbs.	674.44	Y
SD6DTRES	Adjustable Re-Support	1	N/A	157.02	Y
SD6DTAWS	Adjustable Wall Strap	1	2.2 lbs.	114.21	Y
SD6DTAWSSS	Adjustable Wall Support - Stainless	1	N/A	164.17	Y
SD6DTXWS	Extended Wall Support	1	N/A	264.10	Y
SD6DTXWSSS	Extended Wall Support - Stainless	1	N/A	428.26	Y

For same day shipping, place order by: 1pm (CO), 2pm (CA, WA) and 11am (MN, TX). Give us a call at 1-800-682-9722

Stock: Y = Stock, N or \* = Non-Stock, LTSD = Limited to Stock on Hand

Non-Stock Item Notice: Items marked non-stock must be ordered in case quantities

## Wood Chimney & Pipe

### M & G Dura-Vent

Duratech Chimney Systems - 8" Diameter

**DuraVent**  
Member of & M&G Group

8" Firestop					
Item No.	Description	Pkg.	Wt.	Retail	Stocked
SD8DTWT	Wall Thimble	1	6.9 lbs.	\$237.65	Y
SD8DTIWT	Insulated Wall Thimble	1	N/A	278.45	N
SD8DTFRS	Firestop Radiation Shield	1	7.7 lbs.	182.42	Y
SD8DTIS	Attic Insulation Shield	1	7.8 lbs.	254.26	Y
SD8DTRRS	Roof Radiation Shield	1	5 lbs.	203.85	Y
8" Caps and Flashings					
SD8DTCTF	Chase Top Flashing	1	2.3 lbs.	\$134.47	N
SD8DTF6	Adjustable Roof Flashing 0/12 - 6/12	4	26.6 lbs.	241.33	Y
SD8DTF12	Adjustable Roof Flashing 7/12 - 12/12	1	6.5 lbs.	313.26	Y
SD8DTF18	Adjustable Roof Flashing 13/12 - 18/12	1	12.5 lbs.	486.44	N
SD8DTF24	Adjustable Roof Flashing 19/12 - 24/12	1	15.5 lbs.	851.39	Y
SD8DTFF	Flat Roof Flashing	4	11.5 lbs.	315.09	Y
SD8DTF6L	Large Base Adjustable Roof Flashing 0/12 - 6/12	1	6.7 lbs.	340.91	N
SD8DTF12L	Large Base Adjustable Roof Flashing 7/12 - 12/12	1	10.4 lbs.	445.94	N
SD7DTSC	Storm Collar	10	1 lbs.	38.65	Y
8" Caps and Flashings					
SD8DTVC	Chimney Cap	1	4.9 lbs.	\$379.58	Y
SD8DTF6DSA	DSA Roof Flashing	4	6.7 lbs.	329.68	Y
SD8DTF12DSA	DSA Roof Flashing	1	6.5 lbs.	480.96	Y
8" Accessories					
SD8DTES	Diameter Elbow Strap	1	2.4 lbs.	\$180.59	N
SD6DTAES	Adjustable Elbow Support	1	1.6 lbs.	107.07	Y
SD7DTTC2	Trim Collar for Round Support Box - Square	1	2.1 lbs.	116.70	N
SD7DTTCR	Trim Collar for Round Support Box - Round (SD7DTTCR2)	1	2.1 lbs.	114.02	Y
SD8DTRSTC3	Trim Collar for Roof Support 0/12 - 3/12	1	2.3 lbs.	149.23	N
SD8DTRSTC6	Trim Collar for Roof Support 4/12 - 6/12	1	2.3 lbs.	149.23	N
SD8DTRSTC9	Trim Collar for Roof Support 7/12 - 9/12	1	2.2 lbs.	149.23	N
SD8DTRSTC12	Trim Collar for Roof Support 10/12 - 12/12	1	2.2 lbs.	149.23	N
SD8DTFC	Finishing Collar w/adaptor	1	1.6 lbs.	130.55	Y
SD8DTAP	Anchor Plate	1	2.5 lbs.	211.89	Y
SD6DTARS	Adjustable Roof Support	1	5.4 lbs.	178.43	Y
SD6DTXRS	Extended Roof Bracket	1	N/A	256.95	Y
SD8DTLB	Locking Band	24	3.8 lbs.	27.62	Y
SD8DTWS	Adjustable Wall Strap - Galvalume	1	2.2 lbs.	127.10	Y
SD8DTWSSS	Adjustable Wall Strap - Stainless	1	2.2 lbs.	182.42	Y
SD5DTSA	Spark Arrestor	1	3.3 lbs.	42.46	Y
SD8DTFS	Firestop	1	N/A	159.70	Y
SD8DTBT	Base Tee	1	6.7 lbs.	219.24	N
SD8DTWTSS	Wall Thimble Exterior Trim - Stainless	1	2.3 lbs.	117.09	N
SD8DTAP14x17	Transition Anchor Plate 14" x 17"	1	11.8 lbs.	820.03	N
SD8DTAP17x17	Transition Anchor Plate 17" x 17"	1	11.8 lbs.	827.38	N
SD8DTAP13x21	Transition Anchor Plate 13" x 21"	1	11.8 lbs.	823.72	N
SD8DTAP17x21	Transition Anchor Plate 17" x 21"	1	11.8 lbs.	831.10	N

For same day shipping, place order by: 1pm (CO), 2pm (CA, WA) and 11am (MN, TX). Give us a call at 1-800-682-9722

Stock: Y = Stock, N or \* = Non-Stock, LTSD = Limited to Stock on Hand

Non-Stock Item Notice: Items marked non-stock must be ordered in case quantities

## Wood Chimney &amp; Pipe

## M &amp; G Dura-Vent

Duratech Chimney Systems - Large Diameter 10" - 16"

**DuraVent**  
 Member of M&G Group

## Duratech Chimney Lengths

For stock status, please visit [shop.aes4home.com](http://shop.aes4home.com) or call 800-682-9722

Item No.	Description	Pkg.	10"		12"		14"		16"	
			Wt.	Retail	Wt.	Retail	Wt.	Retail	Wt.	Retail
SD__DT06	6" Chimney Pipe - Galvalume	1	6.3 lbs.	\$347.29	6.8 lbs.	\$389.57	8.6 lbs.	\$561.71	15.5 lbs.	\$682.51
SD__DT12	12" Chimney Pipe - Galvalume	1	10 lbs.	383.53	12.2 lbs.	425.81	15 lbs.	573.79	16 lbs.	709.69
SD__DT12SS	12" Chimney Pipe - Stainless	1	11.6 lbs.	407.69	12.2 lbs.	494.97	15 lbs.	664.39	17 lbs.	815.39
SD__DT18	18" Chimney Pipe - Galvalume	1	15.5 lbs.	468.09	19.4 lbs.	543.59	22 lbs.	709.69	23 lbs.	785.19
SD__DT18SS	18" Chimney Pipe - Stainless	1	17 lbs.	754.95	19.4 lbs.	619.09	21.7 lbs.	815.39	23 lbs.	1,372.64
SD__DT24	24" Chimney Pipe - Galvalume	1	19 lbs.	603.99	22.6 lbs.	724.79	26.8 lbs.	905.99	29.6 lbs.	966.38
SD__DT24CF	24" Chimney Pipe - Galvalume	1	20 lbs.	634.19	23 lbs.	754.99	-	-	-	-
SD__DT24SS	24" Chimney Pipe - Stainless	1	20 lbs.	664.39	23 lbs.	785.19	27.8 lbs.	1,132.48	30.3 lbs.	1,372.64
SD__DT36	36" Chimney Pipe - Galvalume	1	29.6 lbs.	815.39	34 lbs.	966.38	40 lbs.	1,026.78	42.7 lbs.	1,087.18
SD__DT36CF	36" Chimney Pipe - Galvalume	1	29.6 lbs.	845.59	35 lbs.	996.58	-	-	-	-
SD__DT36SS	36" Chimney Pipe - Stainless	1	27.2 lbs.	936.19	33.2 lbs.	1,117.38	39.3 lbs.	1,358.98	46 lbs.	1,630.77

## Elbows

SD__DTE15	15° Elbow - Galvalume	1	12.5 lbs.	\$724.79	15.7 lbs.	\$754.99	17.5 lbs.	\$815.39	19.4 lbs.	\$905.99
SD__DTE15SS	15° Elbow - Stainless	1	12.5 lbs.	1,029.49	15.7 lbs.	960.85	17.5 lbs.	1,612.87	19.4 lbs.	1,714.85
SD__DTE30	30° Elbow - Galvalume	1	12.5 lbs.	754.99	15.7 lbs.	785.19	17.5 lbs.	830.49	19.4 lbs.	936.19
SD__DTE30SS	30° Elbow - Stainless	1	12.5 lbs.	1,544.23	15.7 lbs.	1,887.39	17.5 lbs.	1,887.39	19.4 lbs.	2,058.98
SD__DTES	Elbow Strap	1	2.8 lbs.	265.34	4 lbs.	289.46	3 lbs.	313.58	3 lbs.	337.70

## Supports, Tees, Caps and Accessories

SD__DTRCS	Round Ceiling Support Box	1	15 lbs.	\$1,141.54	16 lbs.	\$1,887.37	18 lbs.	\$1,343.88	33.5 lbs.	\$1,425.42
SD__DTTCSB	Trim Collar for Round Support Box	1	2.8 lbs.	114.76	3 lbs.	-	2.3 lbs.	129.86	6.6 lbs.	135.90
SD__DTWT	Wall Thimble	1	13 lbs.	1,089.10	13.7 lbs.	767.07	27 lbs.	815.39	19 lbs.	851.63
SD__DTT	Tee w/Cap - Galvalume	1	26.6 lbs.	2,355.56	41 lbs.	2,582.06	50 lbs.	2,868.95	50.4 lbs.	3,050.15
SD__DTTSS	Tee w/Cap - Stainless	1	26.6 lbs.	2,817.62	41 lbs.	2,944.45	50 lbs.	3,183.03	50.4 lbs.	3,412.55
SD__DTTSB	Tee Support Bracket	1	17 lbs.	483.19	11 lbs.	1,121.58	22 lbs.	531.51	13 lbs.	564.73
SD__DTFC	Finishing Collar	1	6 lbs.	377.47	N/A	220.14	N/A	252.92	N/A	290.40
SD__DTAP	Anchor Plate	1	4.2 lbs.	235.56	4.9 lbs.	256.70	5.5 lbs.	410.71	7.4 lbs.	440.91
SD__DTAPD	Anchor Plate w/Damper	1	17 lbs.	1,011.68	17 lbs.	1,102.28	17 lbs.	1,132.48	17 lbs.	1,207.98
SD__DTFRS	Firestop Radiation Shield	1	13 lbs.	754.95	15.7 lbs.	692.87	17.3 lbs.	926.54	20 lbs.	960.85
SD__DTIS	Attic Insulation Shield	1	17 lbs.	857.90	11.8 lbs.	692.87	13 lbs.	1,166.74	15.6 lbs.	712.70
SD__DTCTF	Chase Top Flashing	1	7 lbs.	377.47	11.6 lbs.	446.11	8 lbs.	370.25	11 lbs.	294.28
SD__DTXRB	Extended Roof Bracket	1	15 lbs.	413.73	15.2 lbs.	413.73	15 lbs.	413.73	15.3 lbs.	413.73
SD__DTSC	Storm Collar	1	3.7 lbs.	81.54	6 lbs.	87.58	5.2 lbs.	93.62	4.3 lbs.	99.66
SD__DTF6	Adjustable Roof Flashing	1	6 lbs.	344.27	7.5 lbs.	362.39	8 lbs.	549.63	-	-
SD16DTF12	Adjustable Roof Flashing	1	-	-	-	-	-	-	10 lbs.	570.77
SD__DTFF	Flat Roof Flashing	1	4 lbs.	286.90	4.5 lbs.	292.94	5 lbs.	501.31	6 lbs.	513.39
SD__DTVC1	Chimney Cap	1	10.5 lbs.	679.49	N/A	709.69	13.8 lbs.	815.39	13.7 lbs.	996.58
SD__DTVCE	Economy Chimney Cap	1	8 lbs.	522.92	8.2 lbs.	459.46	14 lbs.	TBD	10.5 lbs.	575.23
SD__DTWS	Wall Strap	1	3 lbs.	195.02	4.6 lbs.	237.57	5.5 lbs.	343.16	6.2 lbs.	229.15
SD10DTSA14	Spark Arrestor 10-14	1	1 lb.	80.81	-	-	-	-	-	-
SD10DTSA16	Spark Arrestor 10-16 Economy	1	10.4 lbs.	82.18	-	-	-	-	-	-
SD10DTSA24	Spark Arrestor 16-24	1	1 lb.	85.61	-	-	-	-	-	-

For same day shipping, place order by: 1pm (CO), 2pm (CA, WA) and 11am (MN, TX). Give us a call at 1-800-682-9722

Stock: Y = Stock, N or \* = Non-Stock, LTSD = Limited to Stock on Hand

Non-Stock Item Notice: Items marked non-stock must be ordered in case quantities

## Wood Chimney & Pipe

### M & G Dura-Vent

Duratech Chimney Systems - Large Diameter 18" - 24"

**DuraVent**  
Member of M&G Group

#### Duratech Chimney Lengths

#### **SPECIAL ORDER - NO RETURNS OR EXCHANGES**

Item No.	Description	Pkg.	18"		20"		22"		24"	
			Wt.	Retail	Wt.	Retail	Wt.	Retail	Wt.	Retail
SD__DT12	12" Chimney Pipe - Galvalume	1	16 lbs.	\$800.29	16 lbs.	\$923.41	16 lbs.	\$1,484.84	16 lbs.	\$1,220.86
SD__DT12SS	12" Chimney Pipe - Stainless	1	16 lbs.	923.41	16 lbs.	1,061.93	16 lbs.	1,123.49	16 lbs.	1,231.21
SD__DT18	18" Chimney Pipe - Galvalume	1	23 lbs.	923.41	23 lbs.	1,046.54	23 lbs.	1,108.10	23 lbs.	1,215.82
SD__DT18SS	18" Chimney Pipe - Stainless	1	23 lbs.	1,061.93	23 lbs.	1,200.43	23 lbs.	1,277.39	23 lbs.	1,400.50
SD__DT24	24" Chimney Pipe - Galvalume	1	29.6 lbs.	1,046.54	50 lbs.	1,169.65	29.6 lbs.	1,717.02	29.6 lbs.	1,338.95
SD__DT24SS	24" Chimney Pipe - Stainless	1	29.6 lbs.	1,200.43	50 lbs.	1,354.34	29.6 lbs.	1,385.12	29.6 lbs.	1,539.02
SD__DT36	36" Chimney Pipe - Galvalume	1	42.7 lbs.	1,169.65	65 lbs.	1,231.21	42.7 lbs.	1,292.78	42.7 lbs.	1,462.07
SD__DT36SS	36" Chimney Pipe - Stainless	1	42.7 lbs.	1,338.95	42.7 lbs.	1,415.89	42.7 lbs.	1,492.85	42.7 lbs.	1,692.92
<b>Elbows</b>										
SD__DTE15	15° Elbow - Galvalume	1	19.4 lbs.	\$1,108.10	19.4 lbs.	\$1,169.65	19.4 lbs.	\$1,200.43	19.4 lbs.	\$1,615.97
SD__DTE15SS	15° Elbow - Stainless	1	19.4 lbs.	1,338.95	19.4 lbs.	1,400.50	19.4 lbs.	1,462.07	19.4 lbs.	1,308.17
SD__DTE30	30° Elbow - Galvalume	1	19 lbs.	1,169.65	19 lbs.	1,200.43	19 lbs.	1,261.99	19 lbs.	1,338.95
SD__DTE30SS	30° Elbow - Stainless	1	19 lbs.	1,662.14	19 lbs.	1,692.92	19 lbs.	1,769.87	19 lbs.	1,877.61
SD__DTES	Elbow Strap	1	3 lbs.	221.62	3 lbs.	227.78	3 lbs.	233.93	3 lbs.	240.09
<b>Supports, Tees, Caps and Accessories</b>										
SD__DTAP	Anchor Plate	1	7.4 lbs.	\$480.18	7.4 lbs.	\$541.74	7.4 lbs.	\$572.52	7.4 lbs.	\$634.08
SD__DTAPD	Anchor Plate w/Damper	1	17 lbs.	1,308.17	17 lbs.	1,462.07	17 lbs.	1,539.02	17 lbs.	1,615.97
SD__DTFRS	Firestop Radiation Shield	1	22 lbs.	626.83	3 lbs.	523.27	34 lbs.	554.05	N/A	584.83
SD__DTIS	Attic Insulation Shield	1	15.6 lbs.	797.21	15.6 lbs.	797.21	15.6 lbs.	797.21	15.6 lbs.	827.99
SD18DTRRS	Roof Radiation Shield 18"-24"	1	7.4 lbs.	205.91	-	-	-	-	-	-
SD__DTCTF	Chase Top Flashing	1	18 lbs.	313.59	14 lbs.	231.03	N/A	230.86	N/A	230.86
SD__DTSC	Storm Collar	1	4.3 lbs.	107.74	4.3 lbs.	113.89	4.3 lbs.	120.05	4.3 lbs.	240.21
SD20DTFF	Flat Flashing Tall Cone	1	-	-	6 lbs.	369.82	-	-	-	-
SD__DTVC	Chimney Cap	1	10.5 lbs.	766.44	10.5 lbs.	797.21	10.5 lbs.	797.21	10.5 lbs.	827.99
SD__DTT	Tee w/Cap - Galvalume	1	9.5 lbs.	3,766.73	N/A	4,314.62	N/A	4,424.20	N/A	4,588.56
SD__DTFC	Finishing Collar	1	N/A	421.55	N/A	484.78	N/A	557.38	N/A	641.69
SD__DTTSS	Tee w/Cap - Stainless	1	10 lbs.	3,876.31	64 lbs.	4,424.20	N/A	4,533.77	N/A	4,698.13
SD__DTWS	Wall Strap	1	6.2 lbs.	283.19	6.2 lbs.	289.33	6.2 lbs.	295.49	6.2 lbs.	301.65

For same day shipping, place order by: 1pm (CO), 2pm (CA, WA) and 11am (MN, TX). Give us a call at 1-800-682-9722

Stock: Y = Stock, N or \* = Non-Stock, LTSD = Limited to Stock on Hand

Non-Stock Item Notice: Items marked non-stock must be ordered in case quantities

## Wood Chimney & Pipe

### M & G Dura-Vent

#### DVL Close Clearance Connector

DVL double-wall stovepipe is engineered for enhanced safety and superior stove performance. The DVL double-wall air insulated design is made to reduce clearance to combustibles. DVL improves stove performance by maintaining high flue gas temperatures for a strong, steady draft.

- Available in sizes 6", 7"\* and 8" diameters
- Durable .012" type 430 stainless steel inner liner
- Drip-free design, no cutting or crimping
- 6" clearance to walls, 8" clearance to ceilings
- U.L. listed to 2100° F
- 25-year warranty

#### DVL Close Clearance Connector

Double wall close clearance connector stovepipe is available in 6", 7"\* and 8" diameters for installation with minimum clearance to combustibles (6" to walls, 8" to ceilings). DVL is constructed with a stainless steel inner wall for long lasting performance and safety. For mobile home installations, follow the appliance manufacturer's installation instructions.

#### DVL Adjustable Length

Used whenever fixed lengths of DVL are not appropriate because of interior obstructions. There is approximately 3" of adjustment on the 6" length and 7" of adjustment on the 12" length of pipe. All pieces must have a minimum 1" overlap with all connecting pipe.

#### DVL Telescoping Length

Allows one piece installation from stove to ceiling support box with close clearance connector. Available in 29"-48" and 40"-68" extensions. Easy to install; no cutting required.

#### DVL Close Clearance Adapter

This stainless steel close clearance adapter is the only part that will allow for a connection from double wall DVL to DuraPlus for a through-the-wall or ceiling support installation. Pipe cannot attach properly without this part.

#### DVL Oval to Round Adapter

Used on appliances with oval flue collars and allows adaption to round pipe.

#### DVL Increaser

To increase from a smaller appliance flue outlet to larger diameter chimney . Must be used with a close clearance adapter when connecting to the support box.

#### DVL Adapter Section

Connects DVL pipe to the appliance flue outlet. The damper is optional. To be used as a stove adapter.

#### DVL Elbows

Offsets obstructions as needed and angles DVL pipe towards the chimney's thimble or the appliance flue outlet. Elbows are not adjustable. 90° elbow not recommended for rear exit appliances.

#### DVL Tee

Tee comes with convenient clean-out cap. For use with rear exit appliances.

**DuraVent**  
Member of M&G Group



Length



DVL  
Adjustable  
Length



DVL Telescoping  
Length

2  
0  
2  
5  
-  
2  
0  
2  
6

For same day shipping, place order by: 1pm (CO), 2pm (CA, WA) and 11am (MN, TX). Give us a call at 1-800-682-9722

Stock: Y = Stock, N or \* = Non-Stock, LTSD = Limited to Stock on Hand

Non-Stock Item Notice: Items marked non-stock must be ordered in case quantities

## Wood Chimney & Pipe

### M & G Dura-Vent

6" DVL Close Clearance Connector (6" I.D. - 7" O.D.)

**DuraVent**  
Member of M&G Group

#### 6" DVL Double Wall Lengths

Item No.	Description	Pkg.	Wt.	Retail	Stocked
SD6DVL48	48" Length	1	12 lbs.	\$316.22	Y
SD6DVL24	24" Length	1	7 lbs.	205.68	Y
SD6DVL18	18" Length	1	5 lbs.	148.47	Y
SD6DVL12	12" Length	1	4 lbs.	124.89	Y
SD6DVL06	6" Wall Length	1	2 lbs.	116.84	Y
SD6DVL12ADJ	12" Adjustable Length (7" Adjustment)	1	4 lbs.	155.09	Y
SD6DVL6ADJ	6" Adjustable Length (3" Adjustment)	1	2 lbs.	126.98	Y
SD6DVL68TA	40"-68" Telescoping Length	1	18 lbs.	497.16	Y
SD6DVL46TA	29"-48" Telescoping Length	1	13 lbs.	374.71	Y

#### 6" DVL Adapters and Increases

SD6DVLORAD	Oval to Round Adapter	1	5 lbs.	\$262.59	N
SD6DVLADT	DVL/DuraBlack Chimney Adapter w/Trim	1	2 lbs.	131.05	Y
SD6DVLADC	Chimney Adapter	6	2 lbs.	71.50	Y
SD6DVLADWD	Adapter/Damper Section	1	3 lbs.	151.14	Y
SD5DVLX6	Increaser 5"-6"	1	3 lbs.	193.22	N

#### 6" DVL Double Wall Tees and Elbows

SD6DVLTL	Black Tee	1	5 lbs.	\$210.84	Y
SD6DVLE45	45° Black Elbow	1	3 lbs.	162.85	Y
SD6DVLE90	90° Black Elbow	1	4 lbs.	243.98	Y



Oval to Round Adapter



Increaser



Adapter Section

7" DVL Close Clearance Connector (7" I.D. - 8" O.D.)

#### 7" DVL Double Wall Lengths

New Item No.	Description	Pkg.	Wt.	Retail	Stocked
SD7DVL48	48" Length	1	13 lbs.	\$369.93	N
SD7DVL24	24" Length	1	7 lbs.	261.81	N
SD7DVL18	18" Length	1	6 lbs.	258.10	N
SD7DVL12	12" Length	1	4 lbs.	166.04	N
SD7DVL06	6" Wall Length	1	3 lbs.	260.81	N
SD7DVL12ADJ	12" Adjustable Length (7" Adjustment)	1	4 lbs.	179.80	N
SD7DVL6ADJ	6" Adjustable Length (3" Adjustment)	1	3 lbs.	192.97	N
SD7DVL68TA	40"-68" Telescoping Length	1	21 lbs.	531.13	N
SD7DVL46TA	29"-48" Telescoping Length	1	15 lbs.	400.06	N

#### 7" DVL Adapters and Increases

SD7DVLADT	DVL/DuraBlack Chimney Adapter w/Trim	-	-	\$329.44	N
SD7DVLADC	Chimney Adapter	6	3 lbs.	171.59	N
SD7DVLADWD	Adapter/Damper Section	1	4 lbs.	181.46	N
SD7DVLAD	Adapter Section without Damper	1	2 lbs.	139.18	N
SD6DVLX7	Increaser 6"-7"	1	3 lbs.	184.86	N

#### 7" DVL Double Wall Tees and Elbows

SD7DVLTL	Black Tee	1	6 lbs.	\$514.74	N
SD7DVLE45	45° Black Elbow	1	4 lbs.	200.97	N
SD7DVLE90	90° Black Elbow	1	5 lbs.	297.67	N



90° Elbow



45° Elbow



Tee

For same day shipping, place order by: 1pm (CO), 2pm (CA, WA) and 11am (MN, TX). Give us a call at 1-800-682-9722

Stock: Y = Stock, N or \* = Non-Stock, LTSD = Limited to Stock on Hand

Non-Stock Item Notice: Items marked non-stock must be ordered in case quantities



## Wood Chimney & Pipe

### M & G Dura-Vent

8" DVL Close Clearance Connector (8" I.D. - 9" O.D.)

**DuraVent**  
Member of M&G Group

#### 8" DVL Double Wall Lengths

Item No.	Description	Pkg.	Wt.	Retail	Stocked
SD8DVL48	48" Length	1	15 lbs.	\$426.28	Y
SD8DVL24	24" Length	1	2 lbs.	263.32	Y
SD8DVL18	18" Length	1	7 lbs.	244.04	Y
SD8DVL12	12" Length	1	5 lbs.	188.57	Y
SD8DVL06	6" Length	1	3 lbs.	165.52	N
SD8DVL12ADJ	12" Adjustable Length (7" Adjustment)	1	5 lbs.	218.57	Y
SD8DVL6ADJ	6" Adjustable Length (3" Adjustment)	1	3 lbs.	181.14	N
SD8DVL68TA	40"-68" Telescoping Length	1	23 lbs.	593.07	Y
SD8DVL46TA	29"-48" Telescoping Length	1	17 lbs.	492.28	Y

#### 8" DVL Adapters and Increases

SD8DVLADT	DVL/DuraBlack Chimney Adapter w/Trim	-	-	\$149.48	N
SD8DVLADC	Chimney Adapter	6	3 lbs.	87.18	Y
SD8DVLORAD	Oval to Round Adapter	1	5 lbs.	262.59	N
SD8DVLADWD	Adapter/Damper Section	1	4 lbs.	233.78	N
SD8DVLAD	Adapter Section without Damper	1	2 lbs.	170.80	N
SD7DVLX8	Increaser 7"-8"	1	4 lbs.	283.64	N
SD6DVLX8	Increaser 6"-8"	1	4 lbs.	202.19	Y

*Designed to fit on the last upper most section of DVL connector pipe. A close clearance adapter must be used.*

#### 8" DVL Double Wall Tees and Elbows

SD8DVL T	Black Tee	1	7 lbs.	\$356.01	N
SD8DVL E45	45° Black Elbow	1	5 lbs.	231.46	Y
SD8DVL E90	90° Black Elbow	1	6 lbs.	330.57	N



Oval to Round Adapter



Increaser



Adapter Section



90° Elbow



45° Elbow



Tee

For same day shipping, place order by: 1pm (CO), 2pm (CA, WA) and 11am (MN, TX). Give us a call at 1-800-682-9722

Stock: Y = Stock, N or \* = Non-Stock, LTSD = Limited to Stock on Hand

Non-Stock Item Notice: Items marked non-stock must be ordered in case quantities

## Wood Chimney & Pipe

### M & G Dura-Vent

#### Dura-Black Single Wall Black Pipe

Dura-Black single-wall, 24-gauge drip free black stovepipe features die-formed end fittings and adjustable lengths that eliminate cutting and crimping. 18" clearance to combustibles required for single wall stovepipe. Warranted for a period of five years from installation.

#### Single Wall Length

To calculate the installed length, subtract 1-1/4" from the "B" measurement (reference the Simpson Dura-Vent brochure at the end of the section). "B" length is overall height of the pipe length.

#### Slip Connector

Connects Dura-Black pipe to ceiling support box or wall thimble. Allows 10 inches of adjustment for an easy, drip-free installation without cutting the pipe. Required for proper connection of pipe.

#### Elbows

For offsetting Dura-Black stovepipe. Elbows are not adjustable.

#### Tee

Use the Dura-Black tee for a drip-free 90° turn with rear exit appliances. Includes clean-out cap.

#### Stovetop Adapter

Suitable for appliance flue outlets from the size specified to 1/8" smaller inside diameter.

#### Double Skirted Stovetop Adapter

Adapts appliance flue outlets from the size specified to 3/8" smaller inside diameter.

#### Increaser

To increase from smaller appliance flue outlet to a larger diameter chimney.

#### Trim Collar

Use to trim pipe at ceiling support box or wall thimble.

#### Oval to Round Adapter

The bottom end ovals easily to connect to the oval flue outlet of the appliance.

#### Damper Section

A short pipe section with the damper conveniently pre-installed.

#### 6"-8" Slip Increaser

Adapts from 6" Dura-Black to 8" Dura/Plus neatly at the ceiling support box or wall thimble. No slip connector needed.

**DuraVent**  
Member of M&G Group



Single Wall Length



Tee



90° Elbow



Slip Connector



Slip Increaser



Double Skirted  
Stovetop Adapter



Stovetop Adapter



45° Elbow



Damper Section

For same day shipping, place order by: 1pm (CO), 2pm (CA, WA) and 11am (MN, TX). Give us a call at 1-800-682-9722

Stock: Y = Stock, N or \* = Non-Stock, LTSD = Limited to Stock on Hand

Non-Stock Item Notice: Items marked non-stock must be ordered in case quantities

## Wood Chimney & Pipe

### M & G Dura-Vent

#### 5"-7" Dura-Black Single Wall Black Pipe

To calculate the installed lengths, subtract 1-1/4" from each length of chimney pipe.

##### 5" Dura-Black Single Wall Accessories

Item No.	Description	Pkg.	Wt.	Retail	Stocked
SD5DBKADSL	Snap-Lock Adapter w/Trim	1	1 lb.	\$164.56	N

##### 6" Dura-Black Single Wall Pipe

SD6DBK48	48" Length	1	8 lbs.	\$103.72	Y
SD6DBK24	24" Length	1	4 lbs.	61.53	Y
SD6DBK12	12" Length	1	3 lbs.	54.97	Y

##### 6" Dura-Black Single Wall Accessories

SD6DBKSC	14" Black Slip Connector	1	3 lbs.	\$82.16	Y
SD6DBKE45	45° Black Elbow	1	2 lbs.	55.40	Y
SD6DBKE90	90° Black Elbow	1	2 lbs.	69.60	Y
SD6DBKT	Black Tee with Clean-Out Cap	1	3 lbs.	162.09	N
SD6DBKAD	Stovetop Adapter	1	1 lb.	49.10	Y
SD6DBKADDB	Double Skirted Stovetop Adapter	1	2 lbs.	72.06	Y
SD5DBKX6	Increaser 5"-6"	1	2 lbs.	70.27	N
SD6DBKTC	Trim Collar	1	1 lb.	32.32	Y
SD6DBKADOR	Round to Oval Adapter	1	3 lbs.	58.57	Y
SD6DBKDS	Damper Section	1	2 lbs.	90.46	Y
SD6DVLADC	DVL/Dura Black Chimney Adapter	6	2 lbs.	71.50	Y
SD6DBKADSL	Snap-Lock Adapter w/Trim	1	1 lb.	124.93	Y

##### 7" Dura-Black Single Wall Pipe

SD7DBK48	48" Length	1	9 lbs.	\$115.78	N
SD7DBK24	24" Length	1	5 lbs.	80.00	N
SD7DBK12	12" Length	1	3 lbs.	62.63	N

##### 7" Dura-Black Single Wall Accessories

SD7DBKSC	14" Black Slip Connector	1	3 lbs.	\$116.67	N
SD7DBKE45	45° Black Elbow	1	3 lbs.	109.82	N
SD7DBKE90	90° Black Elbow	1	3 lbs.	130.40	N
SD7DBKT	Black Tee with Clean-Out Cap	1	5 lbs.	377.47	N
SD7DBKAD	Stovetop Adapter	1	2 lbs.	102.95	N
SD7DBKADDB	Double Skirted Stovetop Adapter	1	2 lbs.	150.98	N
SD6DBKX7	Increaser 6"-7"	1	2 lbs.	77.33	N
SD7DBKTC	Trim Collar	1	1 lb.	82.35	N
SD7DBKADOR	Round to Oval Adapter	1	3 lbs.	123.54	N
SD7DBKDS	Damper Section	1	3 lbs.	124.92	N
SD7DVLADC	DVL/Dura Black Chimney Adapter	6	3 lbs.	171.59	N
SD7DBKADSL	Snap-Lock Adapter w/Trim	1	2 lbs.	186.21	N

**DuraVent**  
Member of M&G Group



Double Skirted  
Stovetop Adapter



Increaser



Oval to Round  
Adapter



Damper Section



Slip Increaser

For same day shipping, place order by: 1pm (CO), 2pm (CA, WA) and 11am (MN, TX). Give us a call at 1-800-682-9722

Stock: Y = Stock, N or \* = Non-Stock, LTSD = Limited to Stock on Hand

Non-Stock Item Notice: Items marked non-stock must be ordered in case quantities

## Wood Chimney & Pipe

### M & G Dura-Vent

8" and 10" Dura-Black Single Wall Black Pipe

**DuraVent**  
Member of M&G Group

To calculate the installed lengths, subtract 1-1/4" from each length of chimney pipe.

#### 8" DuraBlack Single Wall Pipe

Item No.	Description	Pkg.	Wt.	Retail	Stocked
SD8DBK48	48" Length	1	10 lbs.	\$117.05	Y
SD8DBK24	24" Length	1	5 lbs.	71.81	Y
SD8DBK12	12" Length	1	4 lbs.	56.71	Y

#### 8" DuraBlack Single Wall Accessories

SD8DBKSC	Black Slip Connector Without Trim	1	3 lbs.	\$99.09	Y
SD8DBKE45	45° Black Elbow	1	3 lbs.	66.24	Y
SD8DBKE90	90° Black Elbow	1	4 lbs.	90.98	Y
SD8DBKTSS	Black Tee with Clean-Out Cap	1	5 lbs.	328.73	N
SD8DBKAD	Stovetop Adapter	1	2 lbs.	68.07	N
SD8DBKADDB	Double Skirted Stovetop Adapter	1	2 lbs.	73.81	N
SD7DBKX8	Increaser 7"-8"	1	2 lbs.	116.67	N
SD8DBKTC	Trim Collar	1	1 lb.	51.48	Y
SD8DBKADOR	Round to Oval Adapter	1	3 lbs.	69.72	N
SD8DBKDS	Damper Section	1	4 lbs.	115.78	N
SD6DBKXS8	Slip Increaser 6"-8"	1	4 lbs.	107.44	Y
SD8DBKADSL	Snap-Lock Adapter	1	2 lbs.	153.15	Y

#### 10" DuraBlack Single Wall Pipe

SD10DBK24	24" Length	1	7 lbs.	\$164.56	N
SD10DBK12	12" Length	1	4 lbs.	137.27	N

#### 10" DuraBlack Single Wall Accessories

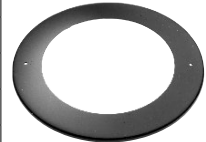
SD10DBKSC	14" Black Slip Connector	1	5 lbs.	\$125.82	N
SD10DBKE45	45° Black Elbow	1	3 lbs.	164.56	N
SD10DBKE90	90° Black Elbow	1	5 lbs.	219.62	N
SD10DBKT	Black Tee with Clean-Out Cap	1	7 lbs.	428.71	N
SD10DBKADDB	Double Skirted Stovetop Adapter	1	2 lbs.	106.08	N
SD8DBKX10	Increaser 8"-10"	1	3 lbs.	171.59	N
SD10DBKTC	Trim Collar	1	1 lb.	85.79	N



Double Skirted  
Stovetop Adapter



Increaser



Trim Collar



Oval to Round  
Adapter



Damper Section



Slip Increaser

For same day shipping, place order by: 1pm (CO), 2pm (CA, WA) and 11am (MN, TX). Give us a call at 1-800-682-9722

Stock: Y = Stock, N or \* = Non-Stock, LTSD = Limited to Stock on Hand

Non-Stock Item Notice: Items marked non-stock must be ordered in case quantities

## Wood Chimney & Pipe

### M & G Dura-Vent

#### DuraChimney II Double Wall Chimney

**DuraVent**  
Member of  M&G Group

DuraChimney II is a double-wall, air-cooled chimney system for use with masonry fireplaces which burn wood, oil, coal or gas. DuraChimney II is designed to stay cool on the outside, to provide a hot draft on the inside and to provide a fire-safe design that protects both the chimney and the building. The double-wall, air-cooled design allows the chimney to expand both radially and lengthwise under high temperatures.

- Available in 10", 12", 14" and 16" diameters.
- Durable .016" type 430 stainless steel liner.
- Unitized pipe sections. No field assembly of inners and outers required
- 2" clearance to combustibles.
- Limited lifetime warranty.
- UL Listed to UL 103 and ULC S604 standards.

**Single Wall Length** - To calculate the installed length, subtract 1-1/2" from the "B" measurement (reference the Simpson Dura-Vent brochure at the end of the section). "B" length is overall height of the pipe length.

**Elbows** - For offsetting DuraChimney II stovepipe. Offsets greater than 30° are not allowed. Elbows are not adjustable.

**Supplementary Support** - Use to help support weight of DuraChimney II. Supports a maximum of 25' of chimney. Use additional Supplementary Supports as needed.

**Stabilizer** - Use to hold DuraChimney II in place. Use inside chase enclosures to stabilize chimney installation. Refer to fireplace manufacturer for additional requirements on use of Stabilizer.

**Anchor Plate** - Use as a starter section for DuraChimney II. Bolts directly to fireplace outlet.

**Anchor Plate with Damper** - Use as a starter section for DuraChimney II. Bolts directly to fireplace outlet. Damper section allows chimney to be closed when fireplace is not in use. Includes chain and lintel hook.

**Firestop** - Use in ceiling/floor penetrations above fireplace. Firestop is not required when passing through the roof. Fits on underside of ceiling.

**Attic Insulation Shield** - Use in all installations that pass through an attic to prevent insulation and debris from accumulating near the chimney, unless chimney is enclosed through attic. Consists of two parts - collar and base.

**Roof Radiation Shield** - Required at top of chase enclosure or where chimney passes through the roof. Roof Radiation Shield is not required if chimney is unenclosed in the attic. Four plates (included) make up on shield.

**Chase Top Flashing** - Encloses the top of a chase while providing a ventilation air passage to the chase. Includes spacer clips.

**Chimney Cap** - Used to terminate chimney system. Required on all installations. Slides over previous section of DuraChimney II pipe to allow for chimney height adjustment. Include spark arrestor.

**Storm Collar** - Use to help prevent rain from entering chase. Use with a flashing and chimney cap.

**Wall Strap** - Use to support and to stabilize the chimney in interior or exterior installations to ensure a 2" clearance. Wall Straps are required every 8' on exterior of building only.

For same day shipping, place order by: 1pm (CO), 2pm (CA, WA) and 11am (MN, TX). Give us a call at 1-800-682-9722

Stock: Y = Stock, N or \* = Non-Stock, LTSD = Limited to Stock on Hand

Non-Stock Item Notice: Items marked non-stock must be ordered in case quantities

## Wood Chimney & Pipe

### M & G Dura-Vent

DuraChimney II 10" Thru 16" Double Wall Chimney

**DuraVent**  
Member of M&G Group

#### DuraChimney II Pipe



For stock status, please visit [order.aes4home.com](http://order.aes4home.com) or call 800-682-9722

Item No.	Description	Pkg.	10"		12"		14"		16"	
			Wt.	Retail	Wt.	Retail	Wt.	Retail	Wt.	Retail
SD__DCA12	12" Chimney Pipe	1	6 lbs.	*\$260.81	10 lbs.	\$181.90	9 lbs.	\$200.72	10 lbs.	\$225.81
SD__DCA18	18" Chimney Pipe	1	8 lbs.	200.71	10 lbs.	216.39	12 lbs.	235.21	13 lbs.	279.11
SD__DCA36	36" Chimney Pipe	1	12 lbs.	304.20*	21 lbs.	332.43	24 lbs.	388.88	28 lbs.	435.92
SD__DCA48	48" Chimney Pipe	1	18 lbs.	348.11	24 lbs.	388.88	24 lbs.	417.10	31 lbs.	453.17

#### DuraChimney II Accessories

SD__DCAE15	15° Elbow	2	4 lbs.	\$583.38*	4 lbs.	\$363.79	10 lbs.	\$398.29	5 lbs.	\$617.70
SD__DCAE30	30° Elbow	2	4 lbs.	326.15*	5 lbs.	363.78	10 lbs.	398.29	12 lbs.	435.92
SD__DCASS	Supplementary Support	1	6 lbs.	300.10*	5 lbs.	343.16	6 lbs.	206.98	6 lbs.	356.89
SD__DCAST	Stabilizer	1	3 lbs.	125.58*	5 lbs.	116.67	3 lbs.	96.09	5 lbs.	192.17
SD__DCAAP	Anchor Plate	1	14 lbs.	583.38*	12 lbs.	535.33	15 lbs.	422.13	17 lbs.	617.70
SD__DCAAPD	Anchor Plate w/Damper	1	8 lbs.	1,304.01*	27 lbs.	906.33	19 lbs.	987.87	26 lbs.	1,050.59
SD__DCAFS	Firestop	1	4 lbs.	95.65*	4 lbs.	100.36	1 lb.	109.76	5 lbs.	114.47
SD__DCAIS	Attic Insulation Shield	1	12 lbs.	733.85*	5 lbs.	746.39	12 lbs.	777.75	12 lbs.	784.03
SD__DCARRS	Roof Radiation Shield	1	4 lbs.	90.95*	10 lbs.	171.59	4 lbs.	108.55	4 lbs.	514.74
SD__DCACTF	Chase Top Flashing	1	2 lbs.	377.47*	4 lbs.	446.11	15 lbs.	316.75	15 lbs.	754.95
SD__DCAVC1	Chimney Cap	1	16 lbs.	525.30*	18 lbs.	533.14	23 lbs.	624.08	24 lbs.	715.03
SD__DCASC	Storm Collar	1	2 lbs.	64.29*	2 lbs.	64.29	3 lbs.	68.99	3 lbs.	68.99
SD__DCAWS	Wall Strap	1	5 lbs.	199.14*	5 lbs.	203.85	7 lbs.	210.12	7 lbs.	312.87



Stabilizer



15° Elbow



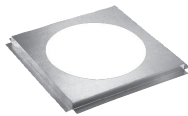
30° Elbow



Pipe Length



Attic Insulation Shield



Firestop



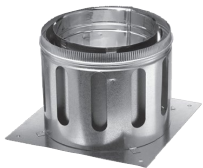
Roof Radiation Shield



Chimney Cap



Anchor Plate w/ Damper



Anchor Plate



Elbow Strap

For same day shipping, place order by: 1pm (CO), 2pm (CA, WA) and 11am (MN, TX). Give us a call at 1-800-682-9722

Stock: Y = Stock, N or \* = Non-Stock, LTSD = Limited to Stock on Hand

Non-Stock Item Notice: Items marked non-stock must be ordered in case quantities



## Wood Chimney & Pipe

### "Reliance Liner" by American Hearth Reducers/increasers



2  
0  
2  
5  
-  
2  
0  
2  
6

#### American Hearth Products "Reliance" Reducer/Increasesers

American Hearth Products "Reliance Liner" brand, matte black, 24-gauge. One piece, spun. Attractive, durable and requires less space than tapered reducers.

Item No.	Description	Pkg.	Wt.	Retail	Stocked
RM3X6BLK	3" x 6" Reducer/Increaser	1	4 lbs.	\$37.00	Y
RM3X8BLK	3" x 8" Reducer/Increaser	1	5 lbs.	42.00	Y
RM4X6BLK	4" x 6" Reducer/Increaser	1	6 lbs.	35.00	Y
RM4X8BLK	4" x 8" Reducer/Increaser	1	7 lbs.	38.00	Y
RM5X6BLK	5" x 6" Reducer/Increaser	1	7 lbs.	21.00	N
RM6X7BLK	6" x 7" Reducer/Increaser	1	8 lbs.	29.00	Y
RM6X8BLK	6" x 8" Reducer/Increaser	1	10 lbs.	35.00	Y
RM6X9BLK	6" x 9" Reducer/Increaser	1	10 lbs.	37.00	N
RM6X10BLK	6" x 10" Reducer/Increaser	1	11 lbs.	34.00	N
RM8X10BLK	8" x 10" Reducer/Increaser	1	11 lbs.	27.00	Y
RM9X10BLK	9" x 10" Reducer/Increaser	1	11 lbs.	25.00	N



Reliance  
Reducer/  
Increaser

For same day shipping, place order by: 1pm (CO), 2pm (CA, WA) and 11am (MN, TX). Give us a call at 1-800-682-9722

Stock: Y = Stock, N or \* = Non-Stock, LTSD = Limited to Stock on Hand

Non-Stock Item Notice: Items marked non-stock must be ordered in case quantities

## Wood Chimney & Pipe

### "Reliance Liner" by American Hearth

#### Single Wall Pipe Baffles



#### Single Wall Pipe Baffles

A 24-gauge, matte black baffle covering half the circumference of a single wall flue. Screw-mounted to the flue with welded brackets which maintain 1" air space between the flue and the baffle. Other lengths, multiple and single wall baffles available by special order; contact AES Inside Sales for pricing. To determine the reduced clearance with the pipe baffle, please consult the appliance manufacturer.



Item No.	Description	Retail	Stocked
RM612PB	6" x 12"	\$40.00	Y
RM618PB	6" x 18"	42.00	N
RM624PB	6" x 24"	46.00	Y
RM636PB	6" x 36"	54.00	Y
RM648PB	6" x 48"	62.00	Y
RM660PB	6" x 60"	71.00	Y
RM672PB	6" x 72"	85.00	Y
RM812PB	8" x 12"	43.00	Y
RM824PB	8" x 24"	49.00	Y
RM836PB	8" x 36"	60.00	Y
RM848PB	8" x 48"	67.00	Y
RM860PB	8" x 60"	73.00	Y
RM872PB	8" x 72"	84.00	Y

### U.S. Fireplace Products



#### Chimney Dampers

#### Seal Tight Damper

Damper seals in your heat and air conditioning and seals out animals, birds and insects. Constructed of stainless steel and aluminum components so damper will never rust or corrode. Damper is lined with a gasket to provide the tightest possible seal and is backed by a Lifetime Warranty. Damper comes with 30' of stainless steel cable and hardware pack.

Item No.	Frame Size	Minimum Inside Flue Size	Maximum Inside Flue Size	Retail	Stocked
US88SD	8" x 8"	6-3/4" x 6-3/4"	9" x 9"	\$347.00	Y
US817SD	8" x 17"	6-1/4" x 14-1/2"	8-3/4" x 16-3/4"	387.00	Y
US913SD	9" x 13"	6-1/2" x 10-1/2"	9" x 12-3/4"	348.00	Y
US1216SD	12" x 16"	9-1/4" x 13"	11-3/4" x 15-1/2"	455.00	Y
US1313SD	13" x 13"	10-1/8" x 10-1/8"	12-3/4" x 12-3/4"	365.00	Y
US1318SD	13" x 18"	9-5/8" x 15"	12-3/4" x 17-1/2"	433.00	Y
US1818SD	18" x 18"	15" x 15"	17-3/4" x 17-3/4"	566.00	Y

#### Accessories

USSDHRDWRE	Seal Tight Hardware Pack (Includes Chain Assembly, Bracket, Nail Anchors, Tube of Adhesive, Allen Wrench & Instruction Sheet, 30' Cable)	\$62.00	Y
USSDINSTALL	Seal Tight Installation Pack (Includes Chain Assembly, Bracket, Nail Anchors, Tube of Adhesive, Allen Wrench & Instruction Sheet)	34.00	Y
USSD501	Seal Tight 50' Cable for 9x13,13x13,12x16 & 13x18 Dampers	70.00	Y
USSD502	Seal Tight 50' Cable for 8x8 Damper	70.00	Y
USSD503	Seal Tight 50' Cable for 8x17 & 18x18 Dampers	70.00	Y



For same day shipping, place order by: 1pm (CO), 2pm (CA, WA) and 11am (MN, TX). Give us a call at 1-800-682-9722

Stock: Y = Stock, N or \* = Non-Stock, LTSD = Limited to Stock on Hand

Non-Stock Item Notice: Items marked non-stock must be ordered in case quantities

## Wood Chimney &amp; Pipe

## U.S. Fireplace Products

## Chimney Dampers



2025-2026

## Energy Top Damper

Energy Top damper is fully gasketed to insure complete seal of the flue. The Energy Top opens as much as 81% higher than other dampers. Its superior design and spring strength opens to a preset height to ensure proper draft. Lifetime warranty. Comes with 30' of stainless cable. For more information visit [www.energytop.com](http://www.energytop.com)

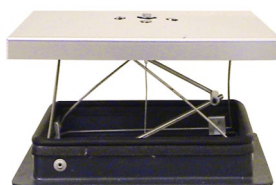
Item No.	Frame Size	Minimum Inside Flue Size	Maximum Inside Flue Size	Retail	Stocked
US88ED	8" x 8"	6" x 6"	9" x 9"	\$427.00	N
US817ED	8" x 17"	6" x 14"	9" x 17-1/2"	533.00	N
US913ED	9" x 13"	6" x 9"	9-1/2" x 12-1/2"	465.00	Y
US1313ED	13" x 13"	9" x 9"	12-1/2" x 12-1/2"	483.00	Y
US1318ED	13" x 18"	9" x 14"	12-1/2" x 17-1/2"	584.00	Y
US1818ED	18" x 18"	14" x 14"	17-1/2" x 17-1/2"	656.00	N

## Access Plates

US88SR	8" x 8" Access Plate w/4-Hex Bolts and 4-Flat Washers	\$73.00	N
US817SR	8" x 17" Access Plate w/4-Hex Bolts and 4-Flat Washers	79.00	N
US913SR	9" x 13" Access Plate w/4-Hex Bolts and 4-Flat Washers	73.00	N
US1216SR	12" x 16" Access Plate w/4-Hex Bolts and 4-Flat Washers	84.00	N
US1313SR	13" x 13" Access Plate w/4-Hex Bolts and 4-Flat Washers	79.00	N
US1318SR	13" x 18" Access Plate w/4-Hex Bolts and 4-Flat Washers	84.00	N
US1818SR	18" x 18" Access Plate w/4-Hex Bolts and 4-Flat Washers	104.00	N

## Accessories

USED50	Energy Top 50' Cable for All Sizes	\$37.00	N
USEDHRDWRE	Energy Top Hardware Pack (Includes Chain Assembly, Bracket, Nail Anchors, Tube of Adhesive, Allen Wrench & Instruction Sheet, 30' Cable)	59.00	N
USEDINSTALL	Energy Top Installation Pack (Includes Chain Assembly, Bracket, Nail Anchors, Tube of Adhesive, Allen Wrench & Instruction Sheet)	34.00	N



## "Reliance Liner" by American Hearth

## Chimney Hatches



Item No.	Description	Retail	Stocked
RM810	Chimney Hatch - 8"x10"	\$104.00	N
RM1212H	Chimney Hatch - 12"x12"	161.00	N

For same day shipping, place order by: 1pm (CO), 2pm (CA, WA) and 11am (MN, TX). Give us a call at 1-800-682-9722

Stock: Y = Stock, N or \* = Non-Stock, LTSD = Limited to Stock on Hand

Non-Stock Item Notice: Items marked non-stock must be ordered in case quantities

## Wood Chimney & Pipe

### "Reliance Liner" by American Hearth Stainless Steel Chimney Caps



Stainless Steel chimney caps by Reliance Liner are stackable, taking up less stock space. A removable top allows convenient access for cleaning and installation. Made from both 22 and 24-gauge, 304 stainless steel. Featuring 4 stainless steel bolts for a secure attachment and a 3/4" x 3/4" stainless steel expanded metal screen. Custom sizes are available by special order; please call AES Inside Sales for pricing assistance. Lifetime warranty. California mesh is also available by adding "CA" after the item number, and CA caps are stocked at the West Sacramento, CA warehouse only.



Item No.	Base Size Tile Dimension	Minimum Outside Tile Dimension	Maximum Outside	Retail	Stocked
RM9499	9" x 9"	7-1/2" x 7-1/2"	9" x 9"	\$84.00	Y
RM94913	9-1/2" x 13-1/2"	7-1/2" x 11-1/2"	9-1/2" x 13-1/2"	94.00	Y
RM941313	13-1/2" x 13-1/2"	11-1/2" x 11-1/2"	13-1/2" x 13-1/2"	103.00	Y
RM941317	13-1/2" x 17-1/2"	11-1/2" x 15-1/2"	13-1/2" x 17-1/2"	113.00	Y
RM941717	17-1/2" x 17-1/2"	15-1/2" x 15-1/2"	17-1/2" x 17-1/2"	135.00	Y
RM94LEG	Leg Kit For Chimney Caps 4/pc Set			12.00	Y
RM94BOLTS	Extra Bolt Bags for RM94 Caps			14.00	N

### HY-C Chimney Caps Big Top Multi-Flue



100% 304-stainless steel welded construction chimney cap with 24-gauge removable hood for easy cleaning and scalloped corners and rolled edges that add style and safety. 18-gauge, 3/4" expanded metal mesh, keeps out rain, birds, animals and debris. Standard mesh height is 8". Also features 24-gauge 304 stainless steel base flanges for extra strength in mounting. Tapmark masonry screw anchor attaches to chimney crown. Screws and adhesive are included. Models come fully assembled unless noted "KD", indicating Knocked Down. Lifetime warranty.

Mesh meeting California regulations (18-gauge, 5/8" 100% 304 expanded stainless steel) is available by special order only, please call AES Inside Sales for more information.



Big Top Multi-Flue

Item No.	Base Size	Hood Size	Rise	Wt.	Retail	Stocked
HCBT1319	13" x 19"	20-1/4" x 25-1/4"	8"	11 lbs.	\$291.99	N
HCBT1426KD (HCBT1426K)	14" x 26"	22-1/4" x 34-1/2"	8"	15 lbs.	355.99	N
HCBT1414	14" x 14"	20-1/4" x 20-1/4"	8"	10 lbs.	275.99	N
HCBT1537KD (HCBT1537K)	15" x 37"	22-1/4" x 46-1/2"	8"	19 lbs.	419.99	N
HCBT1717	17" x 17"	25-1/4" x 25-1/4"	8"	13 lbs.	307.99	N
HCBT1729KD (HCBT1729K)	17" x 29"	22-1/4" x 34-1/2"	8"	16 lbs.	403.99	N
HCBT172910KD (HCBT1729K10W)	17" x 29"	22-1/4" x 34-1/2"	10"	16 lbs.	433.99	N
HCBT1741KD (HCBT1741K)	17" x 41"	22-1/4" x 46-1/2"	8"	20 lbs.	452.99	N
HCBT172914KD (HCBT1729K14W)	17" x 29"	22-1/4" x 34-1/2"	14"	16 lbs.	461.99	N
HCBT174114KD (HCBT1741K14W)	17" x 41"	22-1/4" x 46-1/2"	14"	20 lbs.	508.99	N

For same day shipping, place order by: 1pm (CO), 2pm (CA, WA) and 11am (MN, TX). Give us a call at 1-800-682-9722

Stock: Y = Stock, N or \* = Non-Stock, LTSD = Limited to Stock on Hand

Non-Stock Item Notice: Items marked non-stock must be ordered in case quantities

## Wood Chimney & Pipe

### HY-C Chimney Caps

#### Draft King Single Flue Chimney Covers



An 8" high chimney cap, designed for outside mounting to provide 95% free air space. The free air space creates better draft and the durable construction provides strength to resist the elements. 18-gauge 3/4" expanded mesh is turned inward at the base to allow cover to rest firmly on the tile which closes any opening around the tile. Mesh meeting California regulations (18-gauge, 5/8" 100% 304 expanded stainless steel) is available by special order only, please call AES Inside Sales for more information. Available in all stainless steel or black painted galvanized steel.

#### Stainless Steel

Constructed of 304 stainless steel, a 24-gauge single piece stainless hood with roll formed edges and 16-gauge base for extra strength. Stainless steel slotted hex-head bolts. Lifetime warranty.

Item No.	Outside Tile Size	Minimum Outside Tile Size	Maximum Outside Tile Size	Wt.	Retail	Stocked
HCSS99U	9" x 9"	7-1/2" x 7-1/2"	9-1/2" x 9-1/2"	7 lbs.	\$162.99	Y
HCSS913U	9" x 13"	7-1/2" x 11-1/2"	9-1/2" x 13-1/2"	8 lbs.	186.99	Y
HCSS918U	9" x 18"	7-1/2" x 16-1/2"	9-1/4" x 18-1/4"	9 lbs.	236.99	Y
HCSS1111U	11" x 11"	9-3/4" x 9-3/4"	12" x 12"	9 lbs.	211.99	Y
HCSS1216U	12" x 16"	10" x 14"	12-1/4" x 16-1/4"	11 lbs.	285.99	Y
HCSS1313U	13" x 13"	11-1/2" x 11-1/2"	13-1/2" x 13-1/2"	10 lbs.	261.99	Y
HCSS1318U	13" x 18"	11-1/2" x 16-1/2"	13-1/4" x 18-1/4"	11 lbs.	336.99	Y
HCSS1515U	15" x 15"	13-3/4" x 13-3/4"	16" x 16"	12 lbs.	311.99	N
HCSS1818U	18" x 18"	16-1/2" x 16-1/2"	18" x 18"	13 lbs.	361.99	N

#### Black Painted Galvanized Steel

Features a black powder coat paint finish, 24-gauge single piece galvanized steel hood and 14-gauge base for extra strength. Slotted hex head bolts. 7 year warranty.

HCCBO99	9" x 9"	7-1/2" x 7-1/2"	9-1/2" x 9-1/2"	7 lbs.	\$103.99	Y
HCCBO913	9" x 13"	7-1/2" x 11-1/2"	9-1/2" x 13-1/2"	8 lbs.	106.99	Y
HCCBO918	9" x 18"	7-1/2" x 16-1/2"	9-1/4" x 18-1/4"	10 lbs.	113.99	Y
HCCBO1111	11" x 11"	9-3/4" x 9-3/4"	12" x 12"	10 lbs.	109.99	Y
HCCBO1216	12" x 16"	10" x 14"	12-1/4" x 16-1/4"	12 lbs.	125.99	Y
HCCBO1313	13" x 13"	11-1/2" x 11-1/2"	13-1/2" x 13-1/2"	10 lbs.	115.99	Y
HCCBO1318	13" x 18"	11-1/2" x 16-1/2"	13-1/4" x 18-1/4"	12 lbs.	146.99	Y
HCCBO1515	15" x 15"	13-3/4" x 13-3/4"	16" x 16"	14 lbs.	136.99	Y
HCCBO1818	18" x 18"	16-1/2" x 16-1/2"	18" x 18"	15 lbs.	156.99	Y
HCCBO2020	20" x 20"	18-1/2" x 18-1/2"	20-1/4" x 20-1/4"	15 lbs.	167.99	N
HCCBO14	14" Round Bolt On	13 1/2"	14 1/2"	9 lbs.	151.99	N
HCCBO815	14" Round Slip On	13 1/2"	14 1/2"	11 lbs.	180.99	N

#### Leg Kits

For use when the flue tile does not extend above the crown.

HCSSLK	(HCLK4SS) Stainless Legs for Draft King	2 lbs.	\$27.99	Y
--------	---	--------	---------	---

#### Smoke Guard

Most fireplaces smoke because the opening is too high. SmokeGuard reduces the fireplace opening. It improves the draft and easily corrects the problem!

HCFSGBLK	Smoke Guard 4"		\$132.99	N
HCFSGBLK6	Smoke Guard 6"		138.99	N
HCFSGBLK8	Smoke Guard 8"		146.99	N

### SmokeGuard™



Before



After

For same day shipping, place order by: 1pm (CO), 2pm (CA, WA) and 11am (MN, TX). Give us a call at 1-800-682-9722

Stock: Y = Stock, N or \* = Non-Stock, LTSD = Limited to Stock on Hand

Non-Stock Item Notice: Items marked non-stock must be ordered in case quantities



A M E R I C A N ★ C H I M N E Y ★ S H R O U D

# Class. Defined.

{ PROFESSIONAL DESIGN AND MANUFACTURING OF  
CHIMNEY CAPS AND SHROUDS FOR OVER 30 YEARS. }





# Pride.

American Chimney Shroud is proud to offer more than 70 designs of chimney caps and shrouds, and 14 chimney pot designs, offered in 35 Finishes.



S6



S7



S8



S9



S10



S11



S18



S19



S20



S21



S22



S23

Chimney Shrouds/Caps offer the opportunity to shield an unsightly metal fireplace termination cap from view and dramatically improve the elevation of any building. Roofed Caps and Shrouds can also act as rain caps and spark arrestors for masonry chimneys while enhancing the roofline as well.



S30



S31



S38



S39



S46



S47



S48



S49



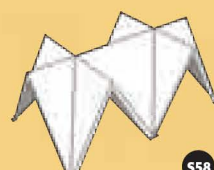
S50



S51



S57



S58



S59



S66



S67



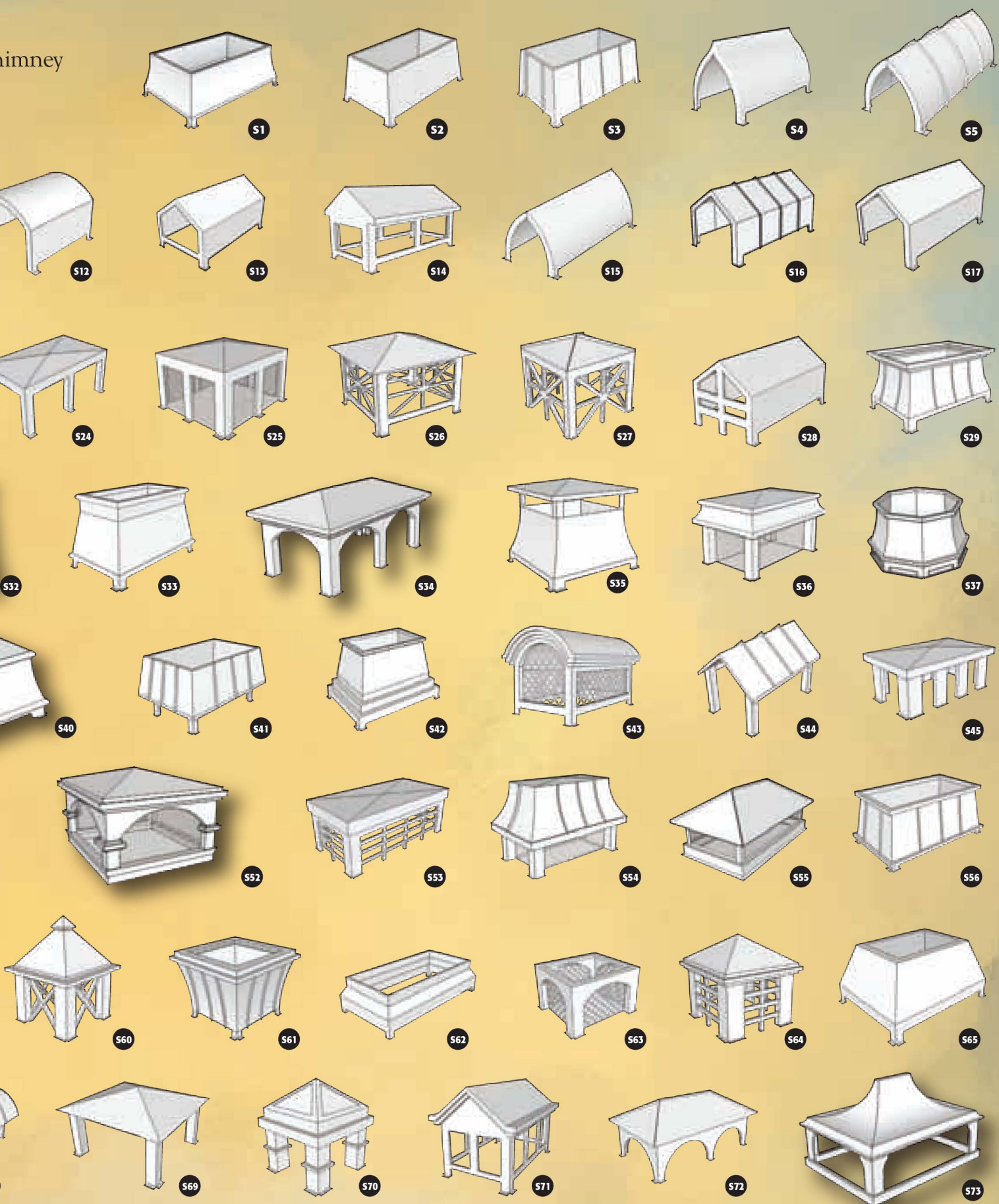
S68



To Learn More About American Chim



imney



Shroud contact [marketing@aes4home.com](mailto:marketing@aes4home.com) or 800.682.9722



# Craftsmanship.

Chimney Pots can also be used to cover an unsightly metal fireplace termination or used in lieu of a factory rain cap or spark arrestor (*check with your local ordinance for proper application with pre-fabricated fireplace systems*). Chimney pots are a popular selection for rain caps and spark arrestors for masonry chimneys as well.



P1



P2



P3



P4



P5



P6



P7



P8



P9



P10



P11



P12



P13



P14

All chimney pots available in custom sizes.

Item#	Standard Size	Base	Overall Height
P1	18"	Round	30"
	20"	Round	40"
P2	20"	Square	42"
P3	20"	Square	32"
P4	20"	Square	46"
P5	20"	Square	40"
P6	20"	Square	36"
P7	22"	Square	42"
P8	20"	Round	40"

Item#	Standard Size	Base	Overall Height
P9	20"	Square	32"
P10	18"	Octagonal	40"
	22"	Octagonal	48"
P11	20"	Square	46"
P12	22"	Octagonal	40"
P13	18"	Octagonal	32"
	22"	Octagonal	40"
P14	18"	Square	36"
	20"	Square	40"
	22"	Square	48"



# Finish.

Our chimney shrouds are offered in a wide variety of colors and finishes for that perfect match. Contact us today to explore our full offering.



Natural Copper



Paint Grade



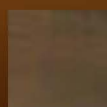
Corten Steel



Green Patina  
Copper



Stainless  
Steel



Brown Patina  
Copper



Freedom Gray  
Copper



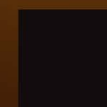
Evergreen  
Copper



Lead Coated  
Copper



Galvanized



Kynar Finish  
Over 30  
Colors  
Available



# Start.

COMPLETE THIS FORM AND RETURN TO AES TO START YOUR ORDER

**Measuring Guide:** Some information is required for proper manufacturing of your chimney cap. See below for information required. Not all information is required.

## Chimney Shroud/Cap Worksheet

### DESIGN:

- \_\_\_ (#1-72) or (P1-P15)  
\_\_\_ Custom (attach image)

### MATERIAL: \*indicates stock gauge/material

- \_\_\_ Natural Copper: 16 oz.\* 20 oz.\* 24 oz. 32 oz.  
\_\_\_ Patina: ☐ Green or ☐ Brown  
\_\_\_ Stainless Steel: 18 ga. 20 ga. 22 ga. 24 ga\* 26 ga.  
\_\_\_ Paint Grip Steel: 18 ga. 20ga. 22 ga. 24 ga\* 26 ga.  
\_\_\_ Colored Steel. Please specify color \_\_\_\_\_  
\_\_\_ Lead Coated Copper: 16oz 20 oz.  
\_\_\_ Freedom Grey Copper: 16 oz.  
\_\_\_ Stucco/Rock/Façade Ready  
Galv. \_\_\_ Stainless \_\_\_ Copper \_\_\_

### MOUNTING STYLE

#### Mount:

- \_\_\_ Flange outward (1" unless otherwise specified)  
\_\_\_ Flange inward (2" unless otherwise specified)

#### Outside Mount:

- \_\_\_ Skirt Length (3" unless otherwise specified)

#### Flush Mount:

- Vertical flange length (3" unless otherwise specified)

### NOTES:

\_\_\_\_\_  
\_\_\_\_\_  
\_\_\_\_\_  
\_\_\_\_\_  
\_\_\_\_\_

### Height:

- Open Top: (Ex. #1, #2 etc.)  
Overall Height \_\_\_\_\_ (20" unless Specified)  
Mailbox Style: (Ex. #5, #8 etc.)  
Overall Height \_\_\_\_\_ (24" unless specified)  
House Style: (Ex. #22, #25 etc )  
Vertical Leg/Wall Height \_\_\_\_\_ (20" unless specified)

### BASE DIMENSION:

#### Top mount:

- \_\_\_ X \_\_\_ Before Flange (includes flange if inward)  
\_\_\_ X \_\_\_ Including Flange (Flange 1" outward unless specified)

#### Outside Mount:

- \_\_\_ X \_\_\_ Skirt Dimension (Outer dimension of chimney or chase cover)  
\_\_\_ X \_\_\_ Shroud/Cap Base dimension  
(Inset 1.5" on all sides from skirt, unless specified)

#### Flush Mount:

- \_\_\_ X \_\_\_ Vertical flange dimension (Outer dimension of chimney or chase cover)

### Mesh/Screening:

- Galv. (5/8") \_\_\_ Stainless Steel (1/3") \_\_\_ Copper (5/8") \_\_\_  
45 Degree \_\_\_ 90 degree \_\_\_

### TERMINATION/CHIMNEY TYPE:

- Masonry \_\_\_ # of flues \_\_\_ Tallest height \_\_\_

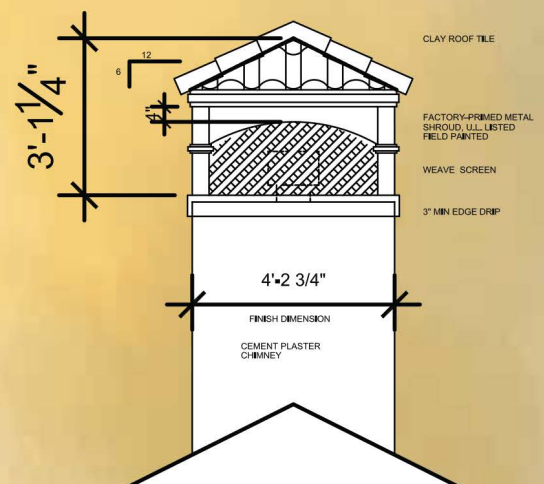
### Metal/Pre-Fab:

- Direct Vent \_\_\_ # of flues \_\_\_ Tallest height \_\_\_  
B- Vent \_\_\_ # of flues \_\_\_ Tallest height \_\_\_  
All Fuel \_\_\_ # of flues \_\_\_ Tallest height \_\_\_  
Air Cooled \_\_\_ # of flues \_\_\_ Tallest height \_\_\_  
None: \_\_\_ Other: \_\_\_\_\_

Call AES for  
Info and Order  
Assistance  
800-682-9722

# Customize.

American Chimney Shroud is accustomed to designing and manufacturing from sketches, architectural details or photographs. Feel free to supply us with your image, and we will gladly supply a 3D rendering for approval.



Call 800-682-9722 or visit  
[www.orders.aes4home.com](http://www.orders.aes4home.com)

